



## Submittal Data Sheet

Daikin AURORA 1.0-Ton Wall Mounted Unit

FTX12WMVJU9RXL12WMVJU9

### FEATURES

- Hot start technology
- Auto-restart (after power failure)
- IR controller included

### BENEFITS

- Quiet operation
- Low ambient cooling operation down to -4°F (-20°C) with field setting and air adjustment grille
- Operating Range - Cooling (50°F - 114.8°F)
- Operating Range - Heating (-13°F - 64.4°F)
- 12 year limited parts and compressor warranty with online registration
- 5 year limited parts warranty for commercial applications

### INDOOR UNIT



### OUTDOOR UNIT





**Submittal Data Sheet**

Daikin AURORA 1.0-Ton Wall Mounted Unit  
FTX12WMVJU9RXL12WMVJU9

SYSTEM PERFORMANCE

Indoor Unit Model No.	FTX12WMVJU9	Indoor Unit Name:	1.0 Ton Wall Mounted Daikin AURORA Indoor Unit
Outdoor Unit Model No.	RXL12WMVJU9	Outdoor Unit Name:	19.5 SEER2, Heat Pump, Ductless ODU, 1.0 Ton, Daikin AURORA
Rated Cooling Capacity (Btu/hr):	10,600	Rated Cooling Conditions:	Indoor (°F DB/WB): 80 / 67 Ambient (°F DB/WB): 95 / 75
Sensible Capacity (Btu/hr):		Rated Piping Length(ft):	25
Max/Min Cooling Capacity (Btu/hr):	13,300 / 4,400	Rated Height Difference (ft):	0.00
Cooling Input Power (kW):			
SEER2 (Non-Ducted/Ducted):	19.50 /	HSPF2 (Non-Ducted/Ducted):	10.0 /
EER2 (Non-Ducted/Ducted):	11.50 /	Heating COP (Non-Ducted/Ducted):	3.6 /
Rated Heating Capacity (Btu/hr):	13,400	Rated Heating Conditions:	Indoor (°F DB/WB): 70 / 60 Ambient (°F DB/WB): 47 / 43
Max/Min Heating Capacity (Btu/hr):	18,800 / 4,400		

SYSTEM DETAILS

Refrigerant Type:	R-410A	Cooling Operation Range (°F DB):	50 - 115
Holding Refrigerant Charge (lbs):	2.09	Heating Operation Range (°F WB):	-13 - 60
Additional Charge (lb/ft):	0.21	Max. Pipe Length (Vertical) (ft):	49
Pre-charge Piping (Length) (ft):	33	Cooling Range w/Baffle (°F DB):	-
Max. Pipe Length (Total) (ft):	66		
Max Height Separation (Ind to Ind ft):	0		

## Submittal Data Sheet

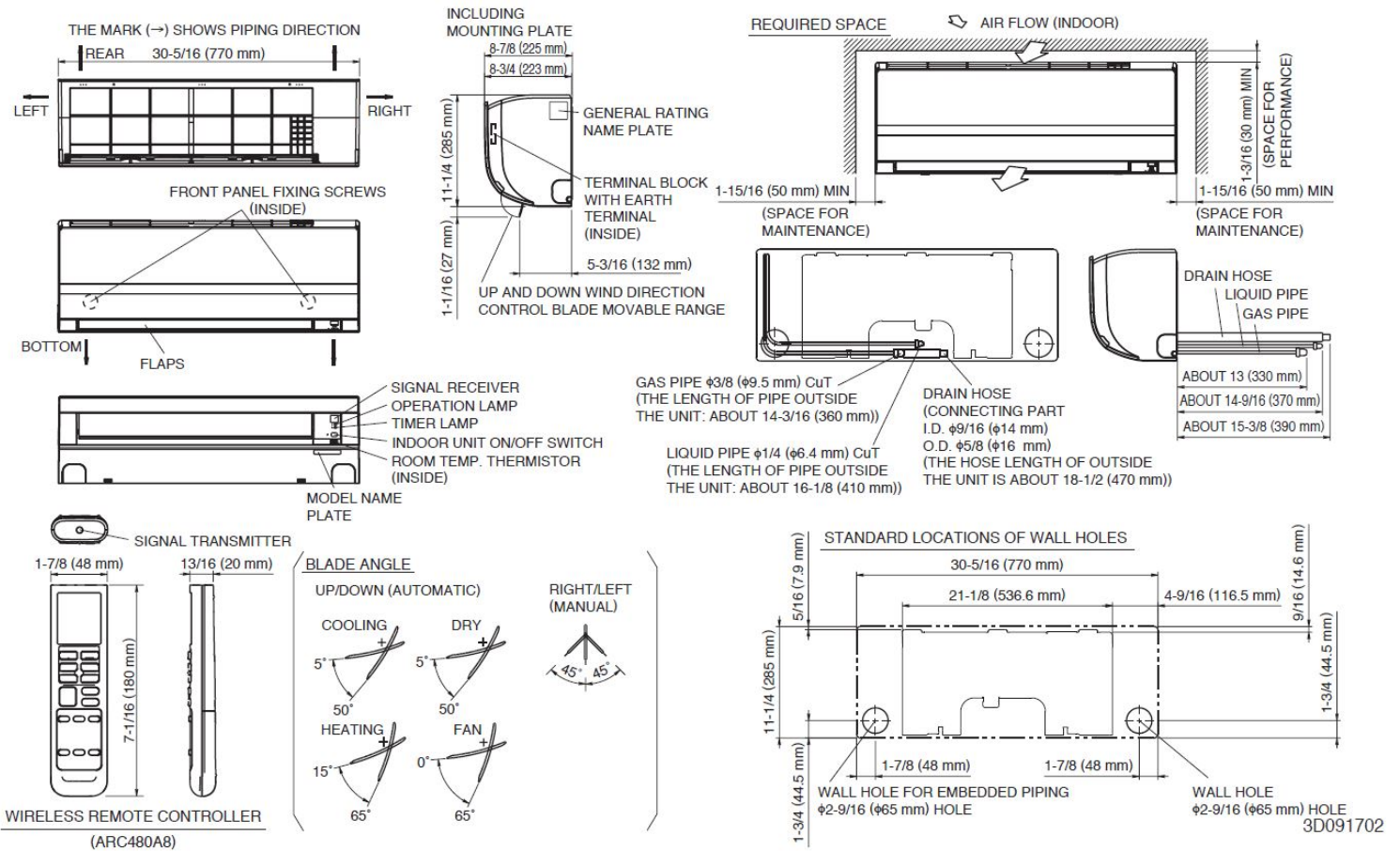
Daikin AURORA 1.0-Ton Wall Mounted Unit

FTX12WMVJU9RXL12WMVJU9

### INDOOR UNIT DETAILS

Power Supply (V/Hz/Ph):	208/230 / 60 / 1	Airflow Rate (H/M/L/SL) (CFM):	434/311/247/145
Power Supply Connections:	L1, L2, L3, Ground	Moisture Removal (Gal/hr):	
Min. Circuit Amps MCA (A):	12.2	Gas Pipe Connection (inch):	3/8
Max Overcurrent Protection (MOP) (A):	15	Liquid Pipe Connection (inch):	1/4
Dimensions (HxWxD) (in):	11-1/4 x 30-5/16 x 8-3/47	Condensate Connection (inch):	5/8
Net Weight (lb):	20	Sound Pressure (H/M/L/SL) (dBA):	45/37/30/19
Ext. Static Pressure (Rated/Max) (inWg):	/	Sound Power Level (dBA):	

### DIMENSIONAL DRAWING - INDOOR UNIT



## Submittal Data Sheet

Daikin AURORA 1.0-Ton Wall Mounted Unit

FTX12WMVJU9RXL12WMVJU9

### OUTDOOR UNIT DETAILS

Power Supply (V/Hz/Ph):	208/230 V 254/277 / 60 / 1	Compressor Stage:	Inverter
Power Supply Connections:	L1, L2, L3, Ground	Capacity Control Range (%):	-
Min. Circuit Amps MCA (A):	12.2	Airflow Rate (H) (CFM):	1144
Max Overcurrent Protection (MOP) (A):	15	Gas Pipe Connection (inch):	5/8
Max Starting Current MSC(A):		Liquid Pipe Connection (inch):	1/4
Rated Load Amps RLA(A):	12.0	Sound Pressure (H) (dBA):	50
Dimensions (HxWxD) (in):	21-5/8 x 26-9/16 x 11-3/16	Sound Power Level (dBA):	
Net Weight (lb):	73		

### DIMENSIONAL DRAWING - OUTDOOR UNIT

