



Submittal Data Sheet

Daikin AURORA 1.25-Ton Wall Mounted Unit
FTX15WMVJU9RXL15WMVJU9

FEATURES

- Hot start technology
- Auto-restart (after power failure)
- IR controller included

BENEFITS

- Quiet operation
- Low ambient cooling operation down to -4°F (-20°C) with field setting and air adjustment grille
- Operating Range - Cooling (50°F - 114.8°F)
- Operating Range - Heating (-13°F - 64.4°F)
- 12 year limited parts and compressor warranty with online registration
- 5 year limited parts warranty for commercial applications

INDOOR UNIT



OUTDOOR UNIT





Submittal Data Sheet

Daikin AURORA 1.25-Ton Wall Mounted Unit
FTX15WMVJU9RXL15WMVJU9

SYSTEM PERFORMANCE

Indoor Unit Model No.	FTX15WMVJU9	Indoor Unit Name:	1.25 Ton Wall Mounted Daikin AURORA Indoor Unit
Outdoor Unit Model No.	RXL15WMVJU9	Outdoor Unit Name:	19.5 SEER2, Heat Pump, Ductless ODU, 1.25 Ton, Daikin AURORA
Rated Cooling Capacity (Btu/hr):	15,000	Rated Cooling Conditions:	Indoor (°F DB/WB): 80 / 67 Ambient (°F DB/WB): 95 / 75
Sensible Capacity (Btu/hr):		Rated Piping Length(ft):	25
Max/Min Cooling Capacity (Btu/hr):	18,400 / 5,800	Rated Height Difference (ft):	0.00
Cooling Input Power (kW):			
SEER2 (Non-Ducted/Ducted):	19.50 /	HSPF2 (Non-Ducted/Ducted):	10.0 /
EER2 (Non-Ducted/Ducted):	12.00 /	Heating COP (Non-Ducted/Ducted):	3.8 /
Rated Heating Capacity (Btu/hr):	18,300	Rated Heating Conditions:	Indoor (°F DB/WB): 70 / 60 Ambient (°F DB/WB): 47 / 43
Max/Min Heating Capacity (Btu/hr):	24,600 / 5,800		

SYSTEM DETAILS

Refrigerant Type:	R-410A	Cooling Operation Range (°F DB):	50 - 115
Holding Refrigerant Charge (lbs):	3.2	Heating Operation Range (°F WB):	-13 - 60
Additional Charge (lb/ft):	0.21	Max. Pipe Length (Vertical) (ft):	66
Pre-charge Piping (Length) (ft):	33	Cooling Range w/Baffle (°F DB):	-
Max. Pipe Length (Total) (ft):	99		
Max Height Separation (Ind to Ind ft):	0		

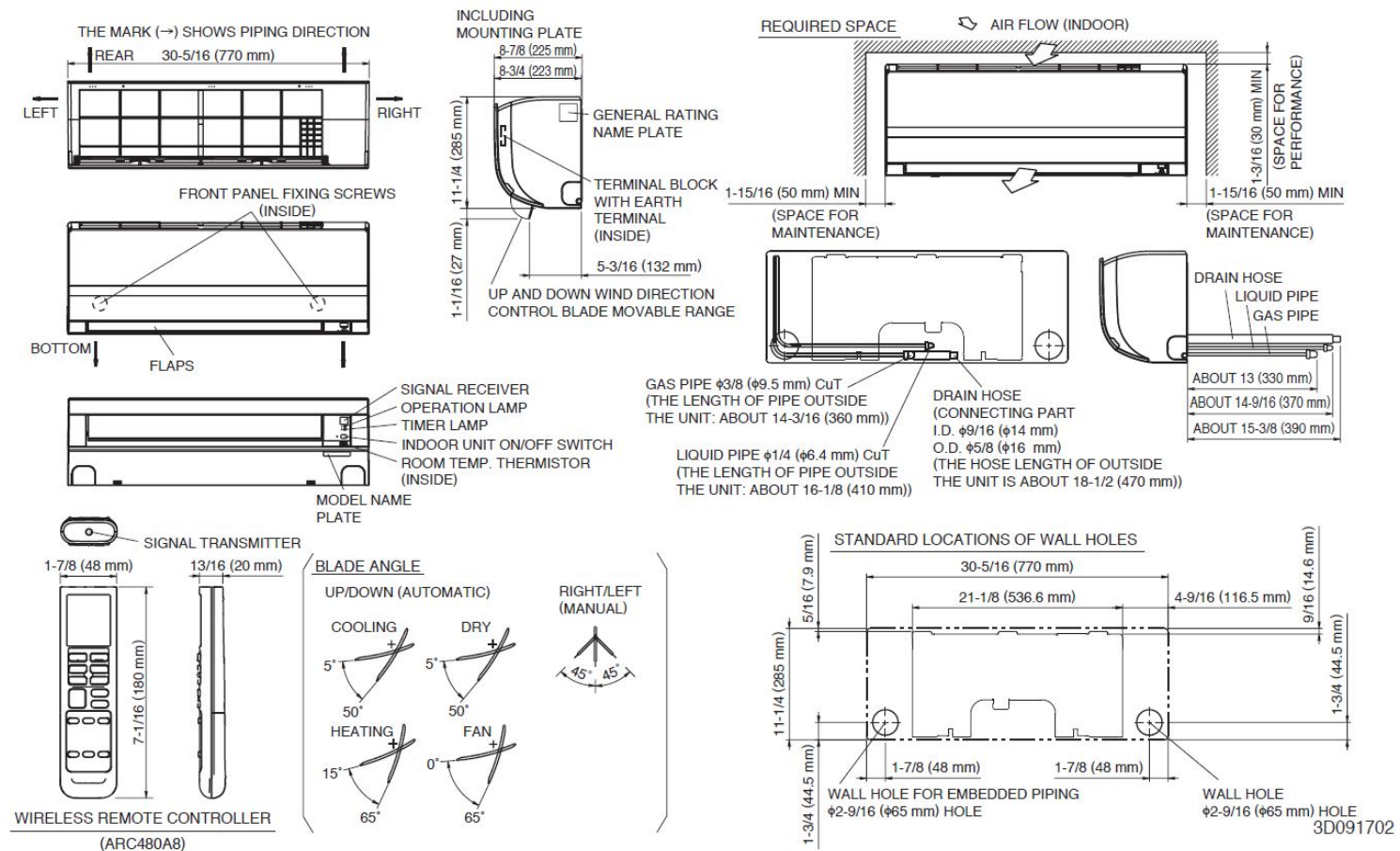
Submittal Data Sheet

Daikin AURORA 1.25-Ton Wall Mounted Unit
FTX15WMVJU9RXL15WMVJU9

INDOOR UNIT DETAILS

Power Supply (V/Hz/Ph):	208/230 / 60 / 1	Airflow Rate (H/M/L/SL) (CFM):	593/505/431/367
Power Supply Connections:	L1, L2, L3, Ground	Moisture Removal (Gal/hr):	
Min. Circuit Amps MCA (A):		Gas Pipe Connection (inch):	1/2
Max Overcurrent Protection (MOP) (A):		Liquid Pipe Connection (inch):	1/4
Dimensions (HxWxD) (in):	11-5/8 x 39- x 10-3/8	Condensate Connection (inch):	5/8
Net Weight (lb):	27	Sound Pressure (H/M/L/SL) (dBA):	45/41/36/33
Ext. Static Pressure (Rated/Max) (inWg):	/	Sound Power Level (dBA):	

DIMENSIONAL DRAWING - INDOOR UNIT



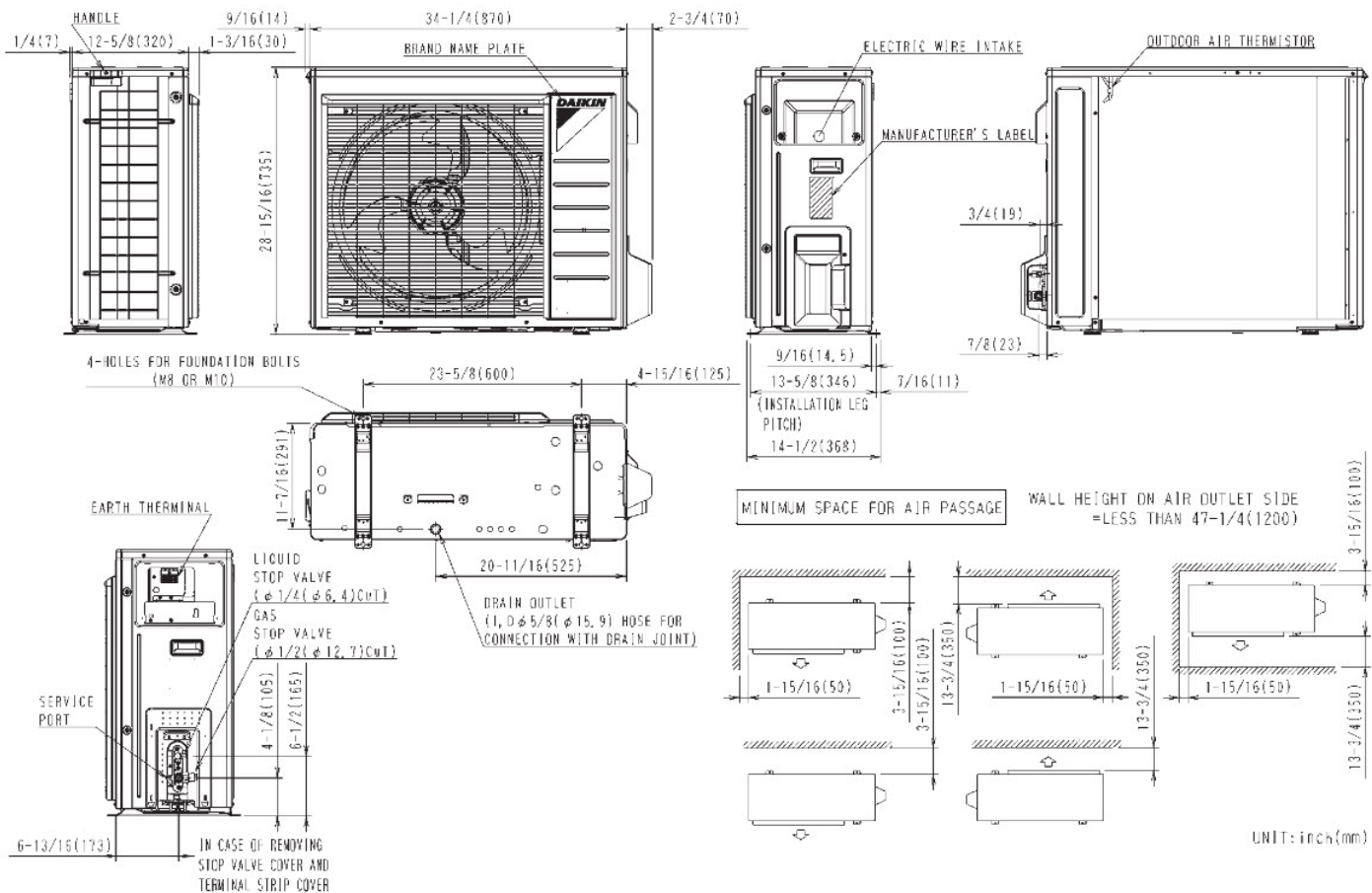


Submittal Data Sheet
Daikin AURORA 1.25-Ton Wall Mounted Unit
FTX15WMVJU9RXL15WMVJU9

OUTDOOR UNIT DETAILS

Power Supply (V/Hz/Ph):	208/230 V 254/277 / 60 / 1	Compressor Stage:	Inverter
Power Supply Connections:	L1, L2, L3, Ground	Capacity Control Range (%):	-
Min. Circuit Amps MCA (A):	12.2	Airflow Rate (H) (CFM):	2044
Max Overcurrent Protection (MOP) (A):		Gas Pipe Connection (inch):	1/2
Max Starting Current MSC(A):		Liquid Pipe Connection (inch):	1/4
Rated Load Amps RLA(A):		Sound Pressure (H) (dBA):	50
Dimensions (HxWxD) (in):	28-15/16 x 34-1/4 x 12-5/8	Sound Power Level (dBA):	
Net Weight (lb):	109		

DIMENSIONAL DRAWING - OUTDOOR UNIT
RXL15WMVJU9





Submittal Data Sheet

Daikin AURORA 1.25-Ton Wall Mounted Unit
FTX15WMVJU9RXL15WMVJU9

INDOOR ACCESSORIES

PART NUMBER	DESCRIPTION	INCLUDED
AZAI6WSCDKB	DKN Residential Cloud Wi-Fi Adaptor for Single- and Multi-Zone System (S21)	No
AZAI6WSPDKC	DKN Plus Interface	No
BRCW901A03	BRC944B2 CONTROL CABLE, 10FT	No
BRCW901A08	Wired Remote Controller Cord - 8m/26ft	No
DACA-CP1-1	Mini Aqua Condensate Pump	No
DACA-CP4-1	MINI WHITE PUMP KIT 100-250V	No
DTST-LTE-LA-A	Daikin One Lite (with Translation Adaptor for S21 only)	No
DTST-ONE-ADA-A	Daikin One+ Smart Thermostat for VRV, SkyAir, Single- and Multi-Zone System	No
KAF970A46	Titanium apatite photocatalytic air-purifying filter WITHOUT frame	No
KRP928BB2S	RA Interface Adaptor for DIII-Net -	No

OUTDOOR ACCESSORIES

PART NUMBER	DESCRIPTION	INCLUDED
FTDBHML	Daikin Bml Drainpan Htr Large	No
KEH063A4E	Daikin BML DrainPan Heater Large	No
KEH063A4EA	Bml LRg Drain Pan Heater Rev A	No
KKG063A42	Back protection wire net	No
KPS063A41	Snow hood (intake side plate) (15, 18 & 24)	No
KPS063A44	Snow hood (intake rear plate) (15,18 & 24)	No
KPS063A47	Snow hood (outlet) (15, 18 & 24)	No
KPW063B4	Air direction adjustment grille	No