



Submittal Data Sheet

1.25-Ton FDMQ Ducted Concealed Unit
FDMQ15WVJU9RX15WMVJU9

FEATURES

- External Static Pressure .6 max
- Hot start technology
- Auto-restart (after power failure)

BENEFITS

- Low ambient cooling operation down to -4°F (-20°C) with field setting and wind baffle
- Operating Range - Cooling (50°F - 114.8°F)
- Operating Range - Heating (5°F - 64.4°F)
- 12 year limited parts and compressor warranty with online registration
- 5 year limited parts warranty for commercial applications

INDOOR UNIT



OUTDOOR UNIT





Submittal Data Sheet

1.25-Ton FDMQ Ducted Concealed Unit
FDMQ15WVJU9RX15WMVJU9

SYSTEM PERFORMANCE

Indoor Unit Model No.	FDMQ15WVJU9	Indoor Unit Name:	1-1/4 Ton FDMQ Ducted Concealed Unit
Outdoor Unit Model No.	RX15WMVJU9	Outdoor Unit Name:	Up to 19.6 SEER2, Heat Pump, Ductless ODU, 1.25 Ton
Rated Cooling Capacity (Btu/hr):	14,400	Rated Cooling Conditions:	Indoor (°F DB/WB): 80 / 67 Ambient (°F DB/WB): 95 / 75
Sensible Capacity (Btu/hr):		Rated Piping Length(ft):	25
Max/Min Cooling Capacity (Btu/hr):	15,700 / 5,100	Rated Height Difference (ft):	0.00
Cooling Input Power (kW):			
SEER2 (Non-Ducted/Ducted):	/ 15.30	HSPF2 (Non-Ducted/Ducted):	/ 8.2
EER2 (Non-Ducted/Ducted):	/ 10.00		
Rated Heating Capacity (Btu/hr):	18,000	Rated Heating Conditions:	Indoor (°F DB/WB): 70 / 60 Ambient (°F DB/WB): 47 / 43
Max/Min Heating Capacity (Btu/hr):	18,500 / 5,600		

SYSTEM DETAILS

Refrigerant Type:	R-410A	Cooling Operation Range (°F DB):	50 - 115
Holding Refrigerant Charge (lbs):	2.49	Heating Operation Range (°F WB):	5 - 64
Additional Charge (lb/ft):	0.21	Max. Pipe Length (Vertical) (ft):	66
Pre-charge Piping (Length) (ft):	33	Cooling Range w/Baffle (°F DB):	-4 - 115
Max. Pipe Length (Total) (ft):	99		
Max Height Separation (Ind to Ind ft):	0		

Submittal Data Sheet

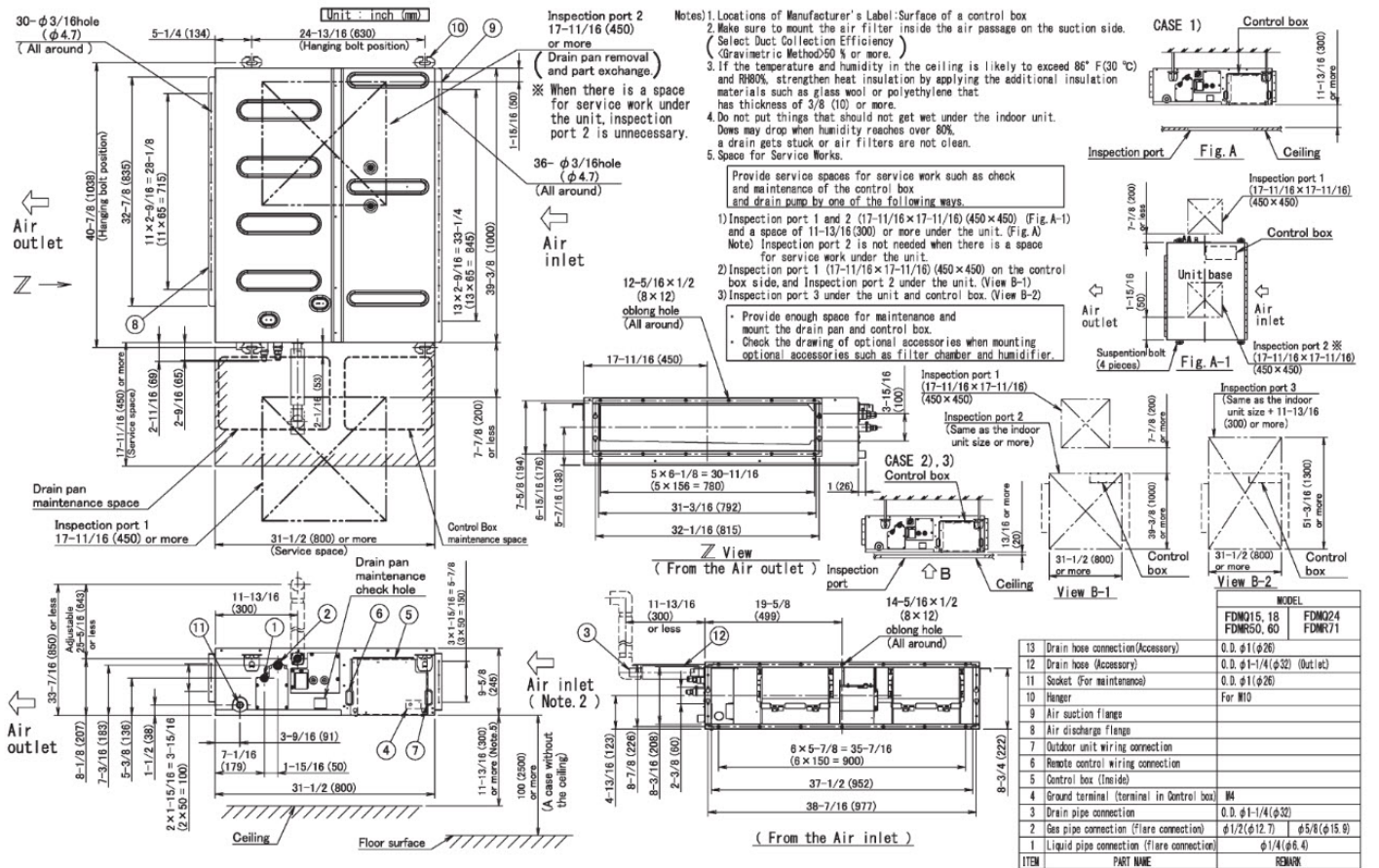
1.25-Ton FDMQ Ducted Concealed Unit
FDMQ15WVJU9RX15WMVJU9

INDOOR UNIT DETAILS

Power Supply (V/Hz/Ph):	208-230 / 60 / 1	Airflow Rate (H/M/L) (CFM):	448/399/350
Power Supply Connections:	See Outdoor Unit for Electrical Specs	Moisture Removal (Gal/hr):	
Min. Circuit Amps MCA (A):		Gas Pipe Connection (inch):	1/2
Max Overcurrent Protection (MOP) (A):		Liquid Pipe Connection (inch):	1/4
Dimensions (HxWxD) (in):	9-5/8 x 39-3/8 x 31-1/2	Condensate Connection (inch):	1-1/4
Net Weight (lb):	77	Sound Pressure (H) (dBA):	34
Ext. Static Pressure (Rated/Max) (inWg):	/ 0.6	Sound Power Level (dBA):	

DIMENSIONAL DRAWING - INDOOR UNIT

FDMQ15/18/24WVJU9



Submittal Data Sheet

1.25-Ton FDMQ Ducted Concealed Unit

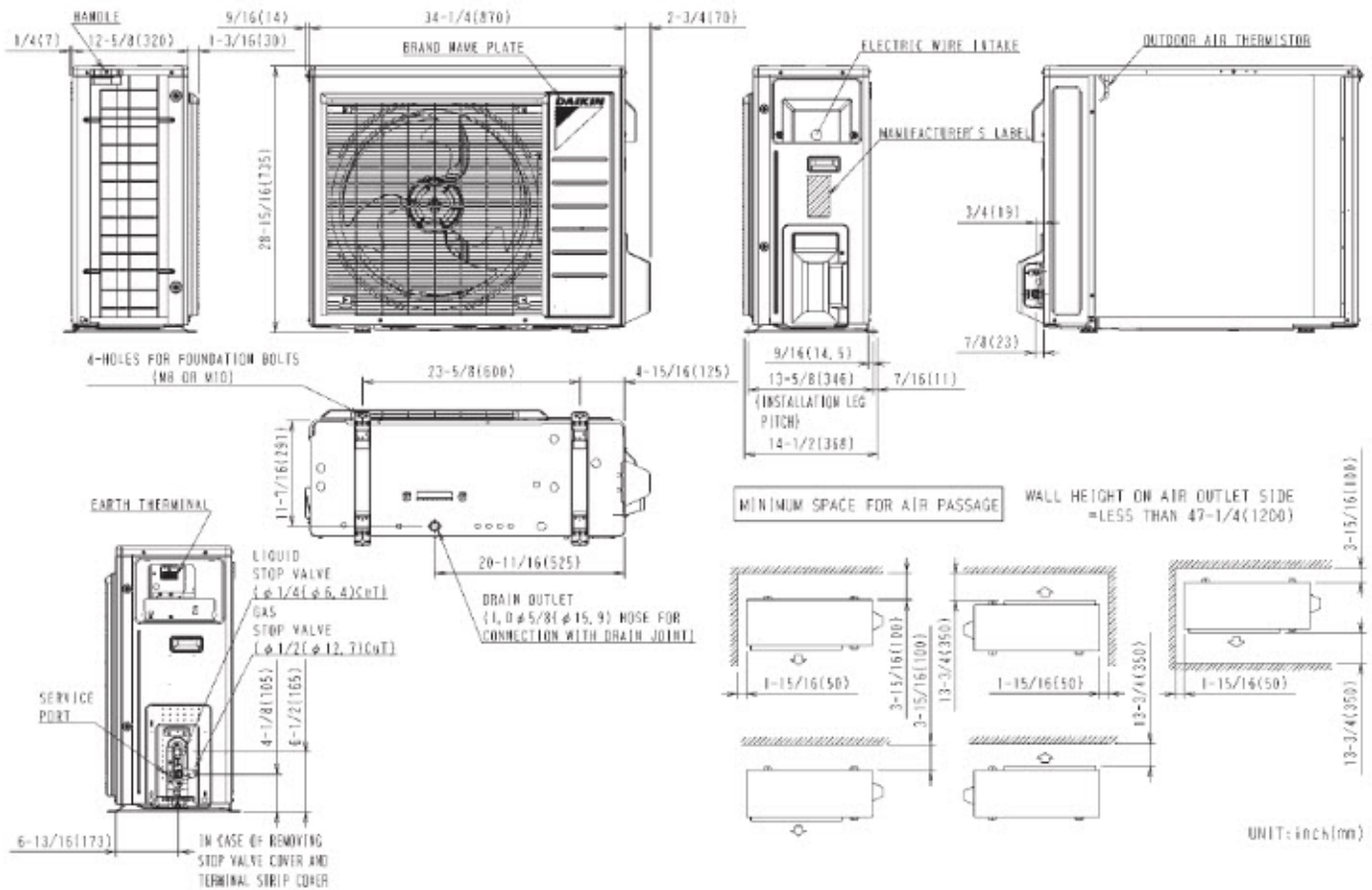
FDMQ15WVJU9RX15WMVJU9

OUTDOOR UNIT DETAILS

Power Supply (V/Hz/Ph):	208/230 / 60 / 1	Compressor Stage:	Inverter
Power Supply Connections:	1, 2, 3, Ground	Capacity Control Range (%):	-
Min. Circuit Amps MCA (A):	8.6	Airflow Rate (H) (CFM):	2313
Max Overcurrent Protection (MOP) (A):	15	Gas Pipe Connection (inch):	1/2
Max Starting Current MSC(A):		Liquid Pipe Connection (inch):	1/4
Rated Load Amps RLA(A):	8.0	Sound Pressure (H) (dBA):	50
Dimensions (HxWxD) (in):	28-15/16 x 34-1/4 x 12-5/8	Sound Power Level (dBA):	
Net Weight (lb):	100		

DIMENSIONAL DRAWING - OUTDOOR UNIT

RX15/18WMVJU9





Submittal Data Sheet
1.25-Ton FDMQ Ducted Concealed Unit
FDMQ15WVJU9RX15WMVJU9

INDOOR ACCESSORIES

PART NUMBER	DESCRIPTION	INCLUDED
AZAI6WSCDKA	DKN Cloud Wi-Fi Adaptor (P1P2)	No
AZAI6WSPDKC	DKN Plus Interface	No
BRC082A43	IR controller for FDMQ	No
BRC1E73	Navigation Remote Controller III(73)	No
BRC1H71W	Madoka Remote Controller	No
DACA-CP1-1	Mini Aqua Condensate Pump	No
DACA-CP2-1	Maxi Orange Condensate Pump	No
DACA-CP3-1	Si-30 Condensate Pump	No
DFBS39A13	MERV 13 Filter Kit	No
DTST-ONE-ADA-A	Daikin One+ Smart Thermostat for VRV, SkyAir, Single- and Multi-Zone System	No
DZKS030E4-3	Zoning Box 4x8" for FXSQ and FDMQ	No
DZKS030E5-3	Zoning Box 5x6" for FXSQ and FDMQ	No
KRCS01-4B	Remote Sensor Kit, (FBQ, FCQ, FTQ, FXFQ, FXMQ, FXTQ)	No
KRCSH2018-01	Button Sensor Kit	No
KRP1C74	Wiring Adapter PCB	No
KRP4A71	Group Control Adaptor PCB	No
KRP4A98	Mounting plate for accessory PCB	No