



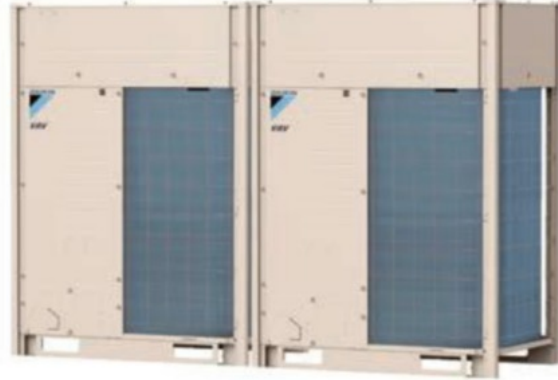
Submittal Data Sheet

28 ton, 575V, VRV IV X HR

REYQ336XBYCA

FEATURES

- Industry's first 3 phase VRF system to integrate with communicating gas furnaces.
- Design flexibility to enlarge system from single to dual module or dual to triple module without changes to installed main pipe sizes.
- Engineered with Daikin vapor injection compressor for optimized part load efficiencies.
- Hot gas defrost circuit with improved control logic allows installation without base pan heater.
- New service window provides quick access to multi-functional display and configuration buttons.
- Multi-functional display provides refrigerant pressures and temperatures eliminating the need to connect gauges during regular maintenance check.
- Easy commissioning with ability to program settings off site using configurator tool.
- Assembled in the US to increase flexibility and reduce lead times.
- Standard Limited Warranty: 10-year limited parts warranty.



BENEFITS

- Choice of gas furnace or heat pump heating for optimizing operational costs based on utility cost.
- Engineered to optimize capital on phased & tenant fit out commercial buildings.
- Year round comfort and energy savings with Variable Refrigerant Temperature technology (VRT).
- Modular and lightweight - enables flexibility in system layout and installation
- Corrosion resistance 1000hr salt spray tested Daikin PE blue fin heat exchanger
- Refrigerant cooled inverter technology keeps PCB cool independent of ambient temperature
- Field performable Intermittent outdoor fan operation to help minimize snow accumulation on fan blades when the system is off.
- Backwards compatible with T-series Branch Selector boxes.



Submittal Data Sheet

28 ton, 575V, VRV IV X HR
REYQ336XBYCA

PERFORMANCE

Outdoor Unit Model No.	REYQ336XBYCA	Outdoor Unit Name:	28 ton, 575V, VRV IV X HR
Type:	Heat Recovery	Unit Combination:	REYQ168XBYCA(x2)
Rated Cooling Conditions:	Indoor (°F DB/WB): 80 / 67 Ambient (°F DB/WB): 95 / 75	Rated Heating Conditions:	Indoor (°F DB/WB): 70 / 60 Ambient (°F DB/WB): 47 / 43
Rated Piping Length(ft):			
Rated Height Difference (ft):			
Rated Cooling Capacity (Btu/hr):	316,000	Rated Heating Capacity (Btu/hr):	280,000
Nom Cooling Capacity (Btu/hr):	330,000	Nom Heating Capacity (Btu/hr):	378,000
Cooling Input Power (kW):		Heating Input Power (kW):	
EER (Non-Ducted/Ducted):	9.20 / 9.00	Heating COP (Non-Ducted/Ducted):	3.3 / 3.2
IEER (Non-Ducted/Ducted):	17.80 / 16.00	Heating COP 17F (Non-Ducted/Ducted):	2.1 / 2.1
		SCHE (Non-Ducted/Ducted):	20.20 / 16.00

OUTDOOR UNIT DETAILS

Power Supply (V/Hz/Ph):	575 / 60 / 3	Compressor Stage:	Inverter
Power Supply Connections:	L1, L2, L3, Ground	Capacity Control Range (%):	6 - 100
Min. Circuit Amps MCA (A):	24.9 + 24.9	Capacity Index Limit:	-
Max Overcurrent Protection (MOP) (A):	30 + 30	Airflow Rate (H) (CFM):	9480
Max Starting Current MSC(A):		Gas Pipe Connection (inch):	1-3/8
Rated Load Amps RLA(A):		Liquid Pipe Connection (inch):	3/4
Dimensions (Height) (in):	66-11/16	H/L Pressure Connection (inch)	1-1/8
Dimensions (Width) (in):	48-7/8		
Dimensions (Depth) (in):	30-3/16	Sound Pressure (H) (dBA):	68
Net Weight (lb):	793 + 793	Sound Power Level (dBA):	
		Max. No. of Indoor Units:	58

Submittal Data Sheet

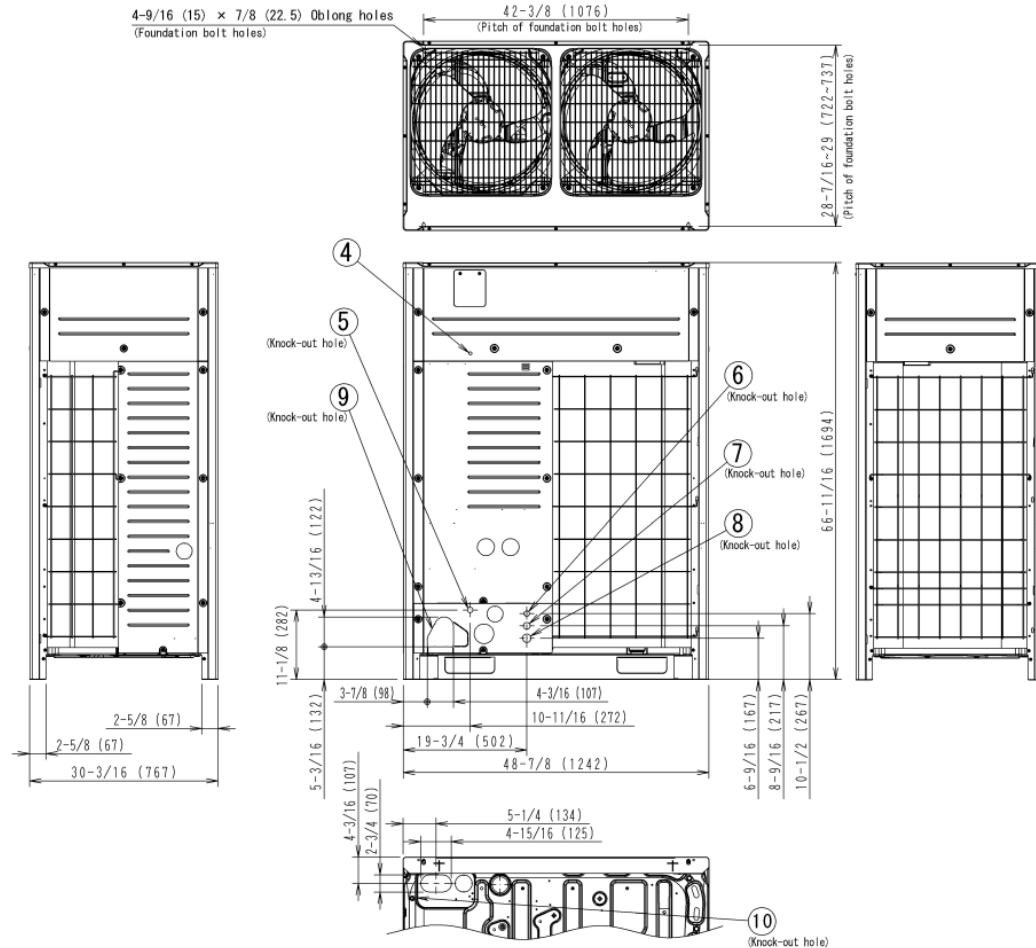
28 ton, 575V, VRV IV X HR

REYQ336XBYCA

SYSTEM DETAILS

Refrigerant Type:	R-410A	Cooling Operation Range (°F DB):	23 - 122
Holding Refrigerant Charge (lbs):	25.8	Heating Operation Range (°F WB):	-13 - 60
Additional Charge (oz/ft):		Max. Pipe Length (Vertical) (ft):	164
Pre-charge Piping (Length) (ft):		Cooling Range w/Baffle (°F DB):	-
Max. Pipe Length (Total) (ft):	540		
Max Height Separation (Ind to Ind ft):	98		

DIMENSIONAL DRAWING



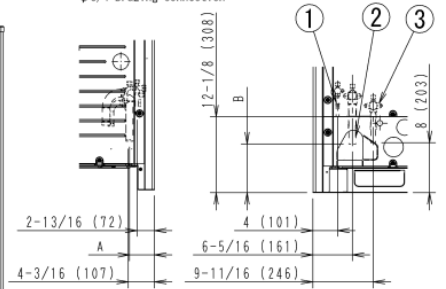
Notes

- For piping connection method (front and bottom sides), see the installation manual.
- Suction gas pipe

Unit : in. (mm)

φ1 Brazing connection	REYQ72.96, 120XBTJA-B, XBYDA-B, XBYCA RELQ72TBTJA-B, TBYDA-B, TBYCA
φ1-1/8 Brazing connection	REYQ144, 168XBTJA-B, XBYDA-B, XBYCA RELQ96, 120TBTJA-B, TBYDA-B, TBYCA

Liquid pipe
φ1/2 Brazing connection
High / low pressure gas pipe
φ3/4 Brazing connection



MODEL	A	B
REYQ72.96, 120XBTJA-B, XBYDA-B, XBYCA RELQ72TBTJA-B, TBYDA-B, TBYCA	4-3/16 (107)	7-1/2 (190)
REYQ144, 168XBTJA-B, XBYDA-B, XBYCA RELQ96, 120TBTJA-B, TBYDA-B, TBYCA	4 (102)	7-13/16 (198)

10	Pipe routing hole(bottom)	See note 1.
9	Pipe routing hole(front)	See note 1.
8	Power cord routing hole	φ 1-3/8 (35)
7	Power cord routing hole	φ 1-1/8 (28.6)
6	Power cord routing hole	φ 7/8 (22.2)
5	Transmission wire routing hole	φ 7/8 (22.2)
4	Grounding terminal	Inside of control box (M8)
3	High / low pressure gas pipe connection port	See note 2.
2	Suction gas pipe connection port	See note 2.
1	Liquid pipe connection port	See note 2.
No.	Parts name	Remarks