



Submittal Data Sheet

2.5-Ton HSP Concealed Ducted Unit
FXMQ30TBVJU

FEATURES

- Low profile chassis design measures 9-11/16" (245 mm) deep.
- Powerful static pressure capability, with up to 0.8 in.w.g. (150 Pa) external static pressure.
- Designed for installation flexibility, with a factory rear-return configuration and field convertible to bottom return.
- DC fan motor with Auto fan speed control optimizes fan energy use by intelligently controlling the fan speed in response to room temperature conditions.
- Ease of installation with auto adjusting airflow at commissioning based on the external static pressure.
- Configurable auxiliary heat control allows for high degree of control of heater on/off temperatures.
- Integral condensate pump with up to 25-5/16" (643 mm) of lift from the drain outlet.
- A maintenance-friendly drain pan inspection port makes it quick and easy to check the conditions of the drain pan.

BENEFITS

- Requires as little as 11-1/4" (285 mm) of clearance above the ceiling thanks to the low profile design.
- Auto fan speed control optimizes fan energy use by automatically adjusting the unit's fan speed as the room temperature approaches the set point.
- The drain pan inspection port simplifies maintenance by allowing for simple and easy inspection of the drain pan conditions.
- Designed for quiet operation, with sound levels as low as 36 dB(A).





Submittal Data Sheet

2.5-Ton HSP Concealed Ducted Unit

FXMQ30TBVJU

PERFORMANCE

Indoor Unit Model No.	FXMQ30TBVJU	Indoor Unit Name:	2.5-Ton HSP Concealed Ducted Unit
Type:	Ducted	Rated Cooling Conditions:	Indoor (°F DB/WB): 80 / 67 Ambient (°F DB/WB): 95 / 75
Rated Cooling Capacity (Btu/hr):	30,000	Rated Heating Conditions:	Indoor (°F DB/WB): 70 / 60 Ambient (°F DB/WB): 47 / 43
Sensible Capacity (Btu/hr):	22,400	Rated Piping Length(ft):	
Cooling Input Power (kW):	0.397	Rated Height Separation (ft):	
Rated Heating Capacity (Btu/hr):	34,000		

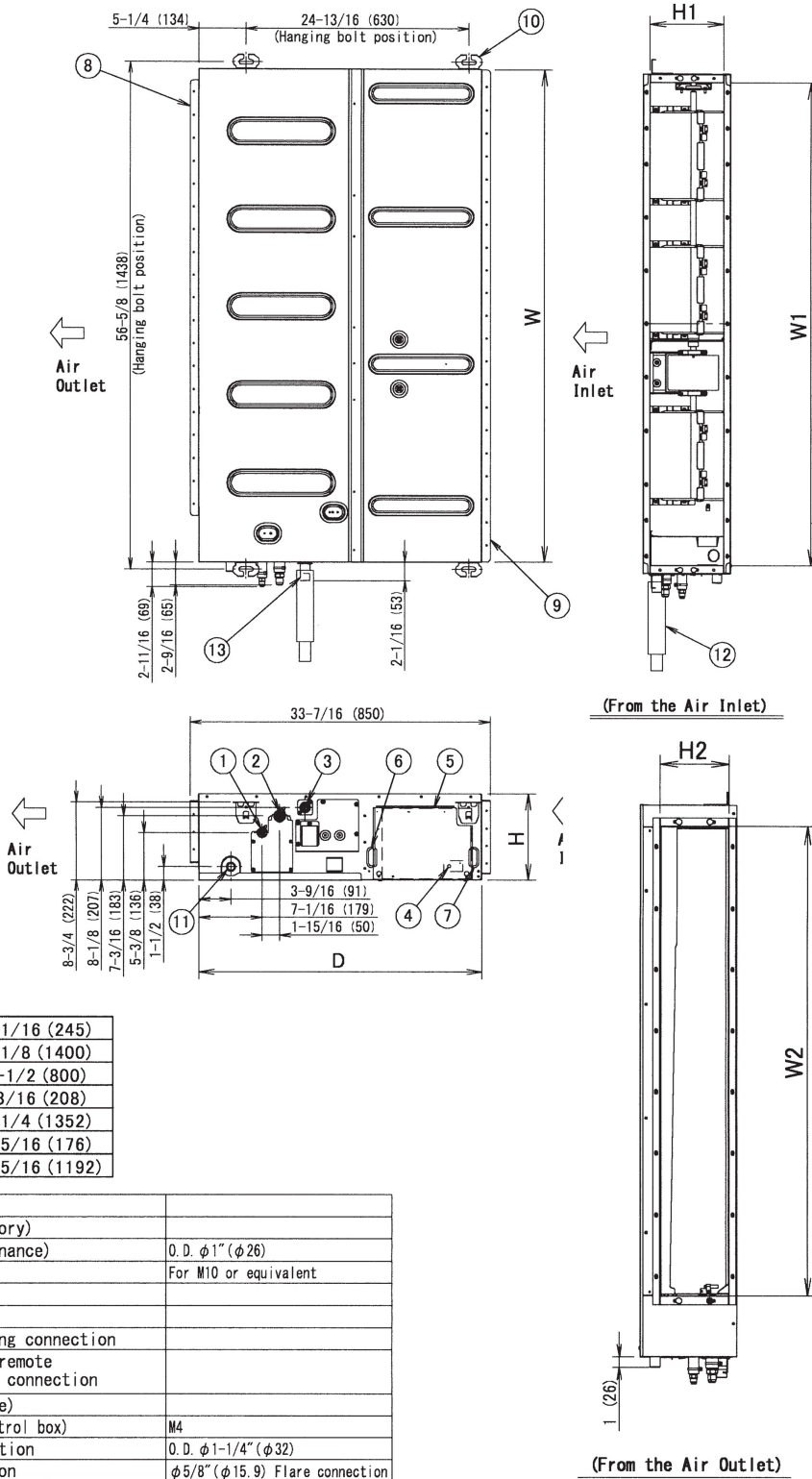
INDOOR UNIT DETAILS

Power Supply (V/Hz/Ph):	208/230 / 60 / 1	Airflow Rate (H) (CFM):	1094
Power Supply Connections:	L1, L2 G	Moisture Removal (Gal/hr):	
Min. Circuit Amps MCA (A):	3	Gas Pipe Connection (inch):	5/8
Max Overcurrent Protection (MOP) (A):	15	Liquid Pipe Connection (inch):	3/8
Dimensions (HxWxD) (in):	9-11/16 x 55-1/8 x 31-1/2	Condensate Connection (inch):	1-1/4
Net Weight (lb):	101	Sound Pressure (H/L) (dBA):	43/38/36
Ext. Static Pressure (Rated/Max) (inWg):	0.4 / 0.8	Sound Power Level (dBA):	71

Submittal Data Sheet

2.5-Ton HSP Concealed Ducted Unit
FXMQ30TBVJU

DIMENSIONAL DRAWING



Note: For additional dimensional data and clearance information, refer to Engineering Data