



Submittal Data Sheet

2.5-Ton R-32 HSP Concealed Ducted Unit

FXMA30AAVJU

FEATURES

- Energy efficient due to the DC fan motor
- Slender design with only 9-11/16 height and requiring 11-1/4 clearance in ceiling space allowing for installation in cramped applications
- New minimal discharge air temperature setting to help mitigate risk of condensation on air vents
- Efficient operation and year-round energy savings through Smart Variable Refrigerant Temperature (VRT) technology
- Advanced economizer control logic for enhanced efficiency
- Enhanced indoor air quality and LEED® ready with MERV 13 filter options
- Ease of installation with auto adjusting airflow at commissioning based on external static pressure
- Provides a high degree of control for auxiliary heating devices, with independently configurable on/off temperature values
- Easy maintenance with complete service access from below



BENEFITS

- Factory-installed integrated refrigerant leak sensor
- Dispersion Mode: Higher airflow rate for leak mitigation through circulation
- Terminal for connection, via optional relay PCB, to external alarms and monitoring systems



Submittal Data Sheet

2.5-Ton R-32 HSP Concealed Ducted Unit
FXMA30AAVJU

PERFORMANCE

Indoor Unit Model No.	FXMA30AAVJU	Indoor Unit Name:	2.5-Ton R-32 HSP Concealed Ducted Unit
Type:		Rated Cooling Conditions:	Indoor (°F DB/WB): 80 / 67 Ambient (°F DB/WB): 95 / 75
Rated Cooling Capacity (Btu/hr):	30,000	Rated Heating Conditions:	Indoor (°F DB/WB): 70 / 60 Ambient (°F DB/WB): 47 / 43
Sensible Capacity (Btu/hr):		Rated Piping Length(ft):	
Cooling Input Power (kW):		Rated Height Separation (ft):	
Rated Heating Capacity (Btu/hr):	34,000		

INDOOR UNIT DETAILS

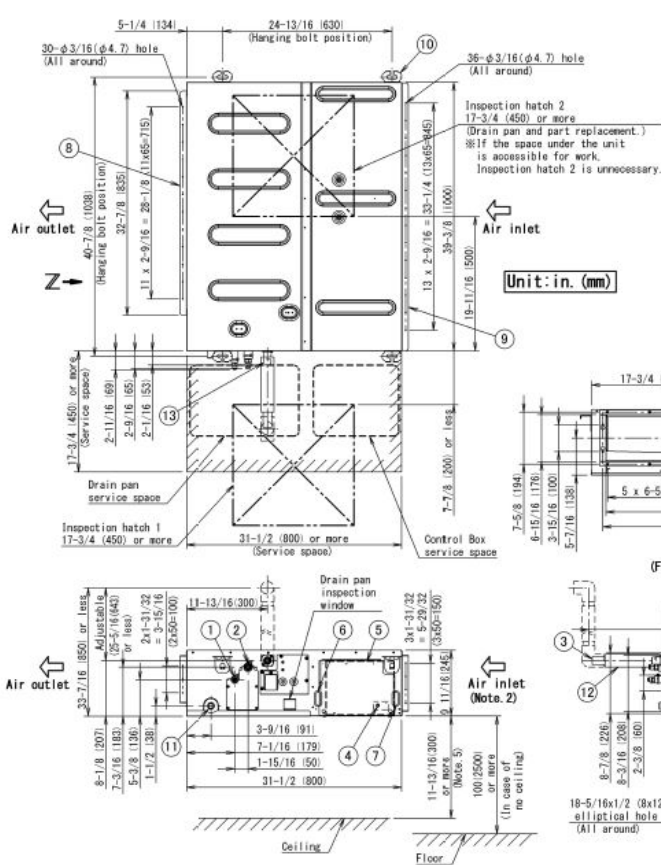
Power Supply (V/Hz/Ph):	208-230 / 60 / 1	Airflow Rate (H/M/L) (CFM):	1094/847/795
Power Supply Connections:	L1, L2, G	Moisture Removal (Gal/hr):	
Min. Circuit Amps MCA (A):	3	Gas Pipe Connection (inch):	5/8
Max Overcurrent Protection (MOP) (A):	15	Liquid Pipe Connection (inch):	3/8
Dimensions (HxWxD) (in):	9-11/16 x 55-1/8 x 31-1/2	Condensate Connection (inch):	1
Ext. Static Pressure (Rated/Max) (inWg):	0.20 / 0.80	Sound Pressure (H/M/L) (dBA):	43/38/36
Net Weight (lb):	101	Sound Power Level (dBA):	71

Submittal Data Sheet

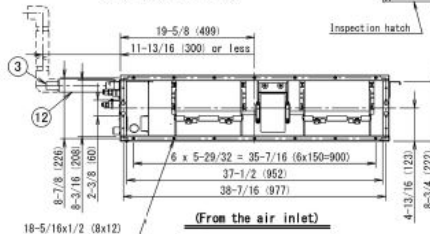
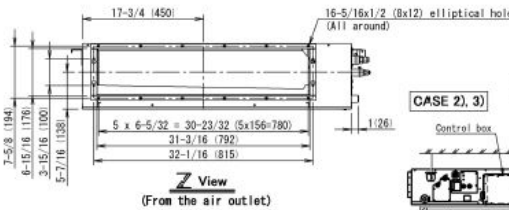
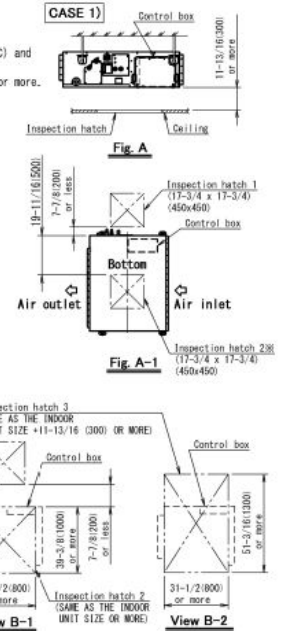
2.5-Ton R-32 HSP Concealed Ducted Unit

FXMA30AAVJU

DIMENSIONAL DRAWING



- Notes) 1. Location of name plate : control box cover
2. Make sure to mount an air filter inside air passage of the suction side.
(Select dust collection efficiency (gravimetric method) 50% or more.)
3. If the temperature and humidity in the ceiling is likely to exceed 86°F (30°C) and RH80%, reinforce thermal insulation by applying additional insulation materials such as glass wool or polyethylene that have thickness of 3/8(10) or more.
4. Do not put anything that should not get wet under the indoor unit.
Dew may drop when humidity reaches over 80%, drain gets stuck or air filter is clogged.
5. Space for service works
Provide service space for service work such as check and maintenance of the control box and drain pump by one of the following ways.
1) Inspection hatch 1 and 2 (17-3/4 x 17-3/4) (450x450) (Fig. A-1) and a space of 11-13/16 (300mm) or more under the unit. (Fig. A)
Note) Inspection hatch 2 is not needed when there is a space for service work under the unit.
2) Inspection hatch 1 (17-3/4 x 17-3/4) (450x450) on the control box side, and inspection hatch 2 under the unit. (View B-1)
3) Inspection hatch 3 under the unit and control box. (View B-2)
• Provide enough space for maintenance and mount the drain pan and control box.
• Check the drawing of optional accessories when mounting optional accessories such as filter chamber.



13	Drain socket	
12	Drain hose (Accessory)	
11	Socket (for maintenance)	0.0 φ1" (φ26)
10	Hanger bracket	For M8-M10 or equivalent
9	Air suction flange	
8	Air discharge flange	
7	Power supply wiring connection	
6	Transmission and remote controller wiring connection	
5	Control box (inside)	
4	Ground terminal (Control box)	BA
3	Drain pipe connection	0.0 φ1-1/4" (φ32)
2	Gas pipe connection	φ5/8" (φ15.9) Flare connection
1	Liquid pipe connection	φ3/8" (φ9.5) Flare connection
ITEM	PART NAME	REMARK