



Submittal Data Sheet

1.5-Ton R-32 HSP Concealed Ducted Unit

FXMA18AAVJU

FEATURES

- Energy efficient due to the DC fan motor
- Slender design with only 9-11/16 height and requiring 11-1/4 clearance in ceiling space allowing for installation in cramped applications
- New minimal discharge air temperature setting to help mitigate risk of condensation on air vents
- Efficient operation and year-round energy savings through Smart Variable Refrigerant Temperature (VRT) technology
- Advanced economizer control logic for enhanced efficiency
- Enhanced indoor air quality and LEED® ready with MERV 13 filter options
- Ease of installation with auto adjusting airflow at commissioning based on external static pressure
- Provides a high degree of control for auxiliary heating devices, with independently configurable on/off temperature values
- Easy maintenance with complete service access from below



BENEFITS

- Factory-installed integrated refrigerant leak sensor
- Dispersion Mode: Higher airflow rate for leak mitigation through circulation
- Terminal for connection, via optional relay PCB, to external alarms and monitoring systems



Submittal Data Sheet

1.5-Ton R-32 HSP Concealed Ducted Unit
FXMA18AAVJU

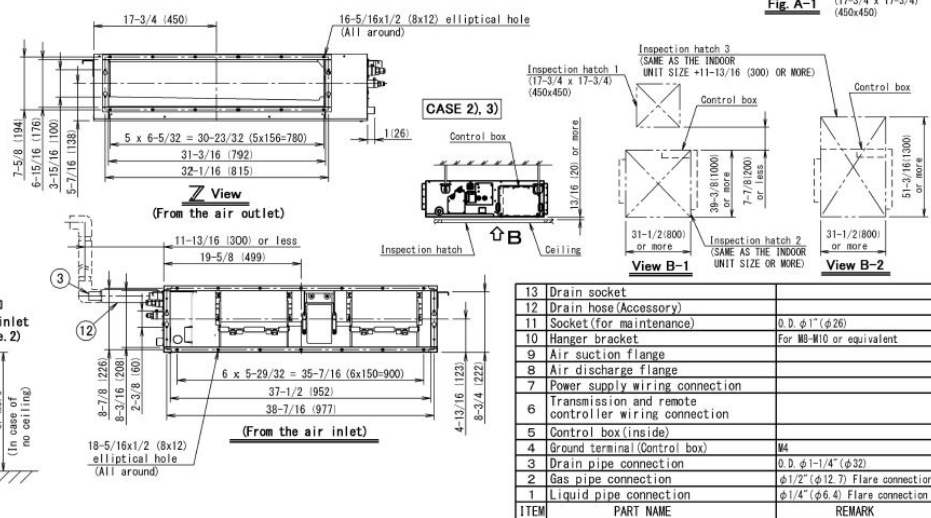
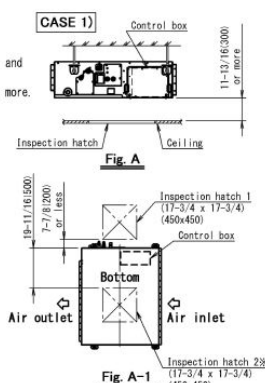
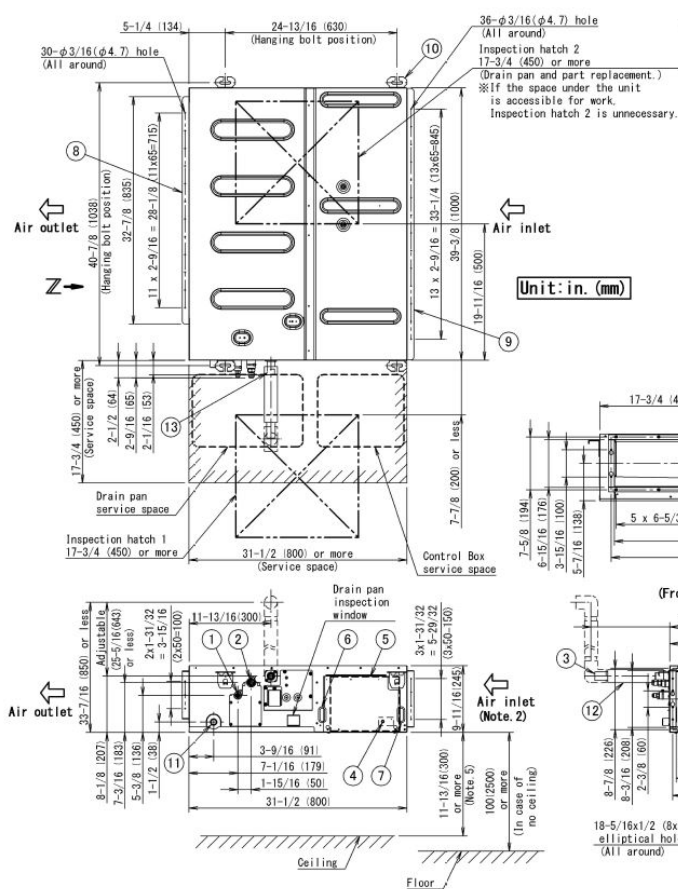
PERFORMANCE

Indoor Unit Model No.	FXMA18AAVJU	Indoor Unit Name:	1.5-Ton R-32 HSP Concealed Ducted Unit
Type:		Rated Cooling Conditions:	Indoor (°F DB/WB): 80 / 67 Ambient (°F DB/WB): 95 / 75
Rated Cooling Capacity (Btu/hr):	18,000	Rated Heating Conditions:	Indoor (°F DB/WB): 70 / 60 Ambient (°F DB/WB): 47 / 43
Sensible Capacity (Btu/hr):		Rated Piping Length(ft):	
Cooling Input Power (kW):		Rated Height Separation (ft):	
Rated Heating Capacity (Btu/hr):	20,000		

INDOOR UNIT DETAILS

Power Supply (V/Hz/Ph):	208/230 / 60 / 1	Airflow Rate (H/M/L) (CFM):	635/565/512
Power Supply Connections:	L1, L2, G	Moisture Removal (Gal/hr):	
Min. Circuit Amps MCA (A):	1.9	Gas Pipe Connection (inch):	1/2
Max Overcurrent Protection (MOP) (A):	15	Liquid Pipe Connection (inch):	1/4
Dimensions (HxWxD) (in):	9-11/16 x 39-3/8 x 31-1/2	Condensate Connection (inch):	1
Ext. Static Pressure (Rated/Max) (inWg):	0.20 / 0.80	Sound Pressure (H/M/L) (dBA):	38/35/32
Net Weight (lb):	82	Sound Power Level (dBA):	66

DIMENSIONAL DRAWING



13	Drain socket	
12	Drain hose (Accessory)	
11	Socket (for maintenance)	Ø D. $\phi 1''$ ($\phi 26$)
10	Hanger bracket	For M8-M10 or equivalent
9	Air suction flange	
8	Air discharge flange	
7	Power supply wiring connection	
6	Transmission and remote controller wiring connection	
5	Control box (inside)	
4	Ground terminal (Control box)	M4
3	Drain pipe connection	Ø D. $\phi 1-1/4''$ ($\phi 32$)
2	Gas pipe connection	$\phi 1/2''$ ($\phi 12.7$) Flare connection
1	Liquid pipe connection	$\phi 1/4''$ ($\phi 6.4$) Flare connection
ITEM	PART NAME	REMARK