



Submittal Data Sheet

Daikin AURORA 1.5-Ton FDMQ Ducted Concealed Unit
FDMQ18WVJU9RXL18WMVJU9

FEATURES

- External Static Pressure .6 max
- Hot start technology
- Auto-restart (after power failure)

BENEFITS

- Low ambient cooling operation down to -4°F (-20°C) with field setting and air adjustment grille
- Operating Range - Cooling (50°F - 114.8°F)
- Operating Range - Heating (-13°F - 64.4°F)
- 12 year limited parts and compressor warranty with online registration
- 5 year limited parts warranty for commercial applications

INDOOR UNIT



OUTDOOR UNIT





Submittal Data Sheet

Daikin AURORA 1.5-Ton FDMQ Ducted Concealed Unit
FDMQ18WVJU9RXL18WMVJU9

SYSTEM PERFORMANCE

Indoor Unit Model No.	FDMQ18WVJU9	Indoor Unit Name:	1-1/2 Ton FDMQ Ducted Concealed Unit
Outdoor Unit Model No.	RXL18WMVJU9	Outdoor Unit Name:	19.5 SEER2, Heat Pump, Ductless ODU, 1.5 Ton, Daikin AURORA
Rated Cooling Capacity (Btu/hr):	17,600	Rated Cooling Conditions:	Indoor (°F DB/WB): 80 / 67 Ambient (°F DB/WB): 95 / 75
Sensible Capacity (Btu/hr):		Rated Piping Length(ft):	25
Max/Min Cooling Capacity (Btu/hr):	19,600 / 9,000	Rated Height Difference (ft):	0.00
Cooling Input Power (kW):			
SEER2 (Non-Ducted/Ducted):	/ 15.20	HSPF2 (Non-Ducted/Ducted):	/ 8.5
EER2 (Non-Ducted/Ducted):	/ 10.00		
Rated Heating Capacity (Btu/hr):	21,600	Rated Heating Conditions:	Indoor (°F DB/WB): 70 / 60 Ambient (°F DB/WB): 47 / 43
Max/Min Heating Capacity (Btu/hr):	25,000 / 9,000		

SYSTEM DETAILS

Refrigerant Type:	R-410A	Cooling Operation Range (°F DB):	50 - 115
Holding Refrigerant Charge (lbs):	3.53	Heating Operation Range (°F WB):	-13 - 60
Additional Charge (lb/ft):	0.32	Max. Pipe Length (Vertical) (ft):	66
Pre-charge Piping (Length) (ft):	33	Cooling Range w/Baffle (°F DB):	-
Max. Pipe Length (Total) (ft):	99		
Max Height Separation (Ind to Ind ft):	0		

Submittal Data Sheet

Daikin AURORA 1.5-Ton FDMQ Ducted Concealed Unit

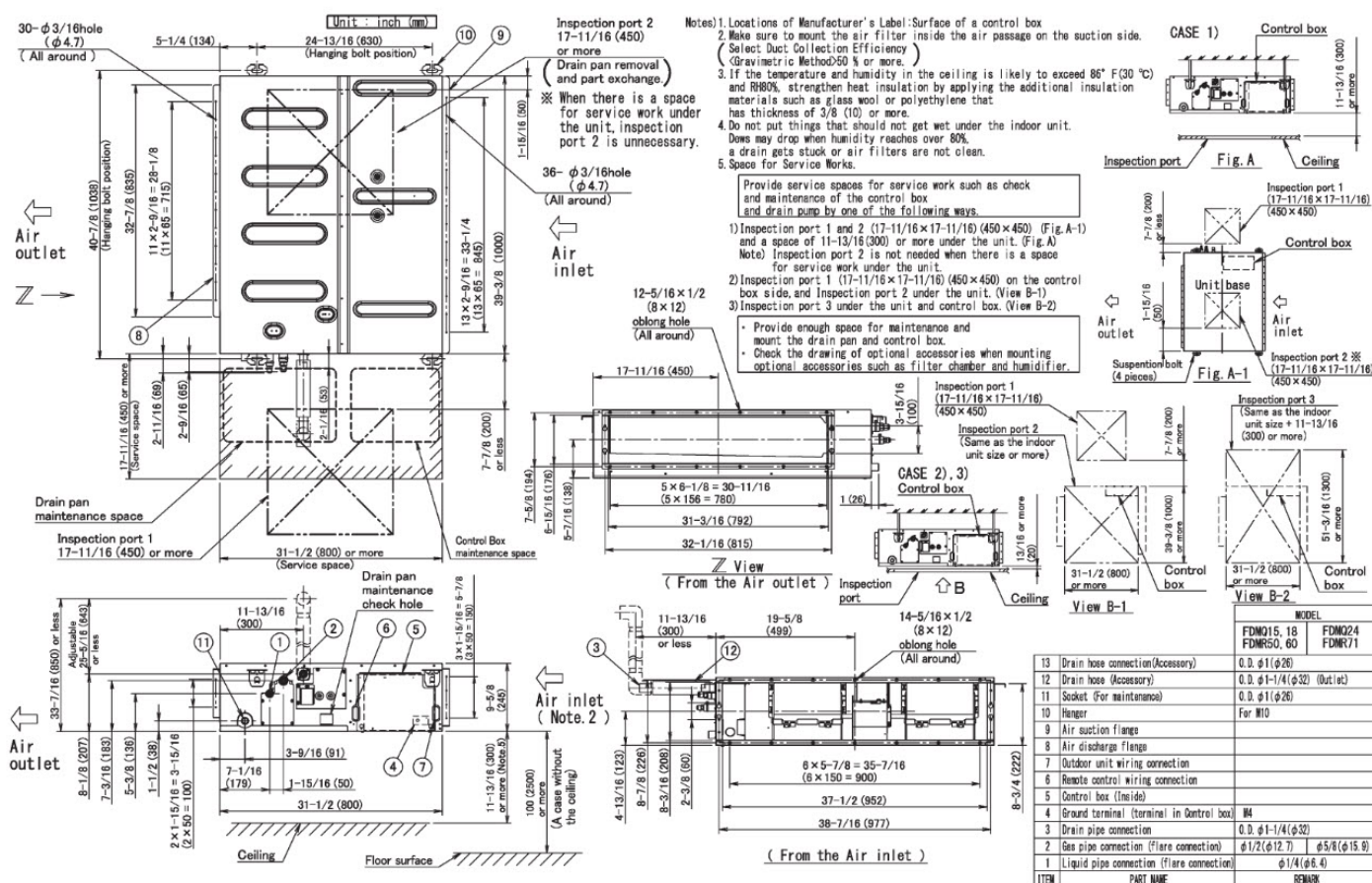
FDMQ18WVJU9RXL18WMVJU9

INDOOR UNIT DETAILS

Power Supply (V/Hz/Ph):	208-230 / 60 / 1	Airflow Rate (H/M/L) (CFM):	614/523/431
Power Supply Connections:	See Outdoor Unit for Electrical Specs	Moisture Removal (Gal/hr):	
Min. Circuit Amps MCA (A):	11.6	Gas Pipe Connection (inch):	1/2
Max Overcurrent Protection (MOP) (A):	15	Liquid Pipe Connection (inch):	1/4
Dimensions (HxWxD) (in):	9-5/8 x 39-3/8 x 31-1/2	Condensate Connection (inch):	1-1/4
Net Weight (lb):	82	Sound Pressure (H) (dBA):	35
Ext. Static Pressure (Rated/Max) (inWg):	/ 0.6	Sound Power Level (dBA):	

DIMENSIONAL DRAWING - INDOOR UNIT

FDMQ15/18/24WVJU9





Submittal Data Sheet

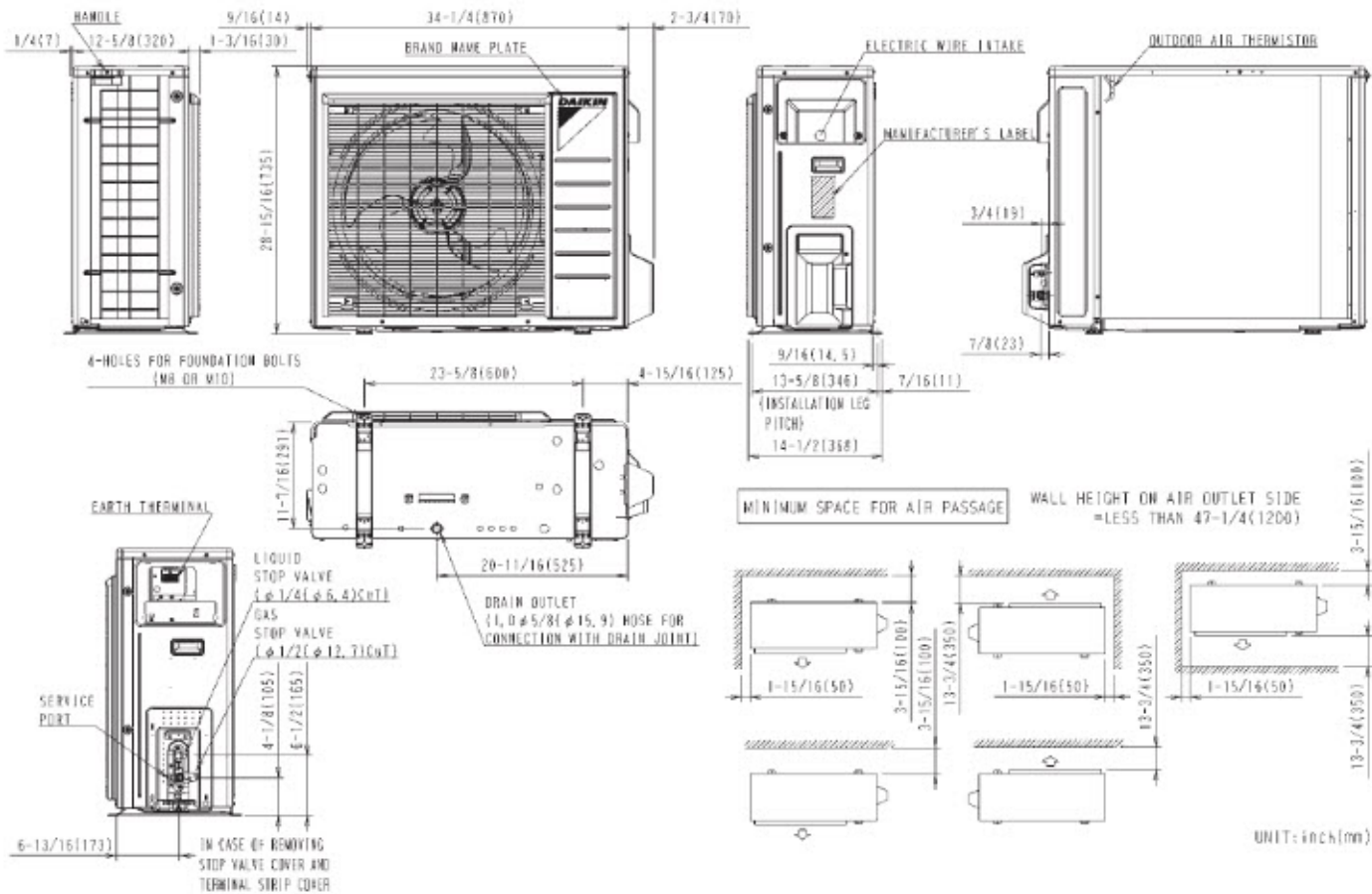
Daikin AURORA 1.5-Ton FDMQ Ducted Concealed Unit
FDMQ18WVJU9RXL18WMVJU9

OUTDOOR UNIT DETAILS

Power Supply (V/Hz/Ph):	208/230 V 254/277 / 60 / 1	Compressor Stage:	Inverter
Power Supply Connections:	L1, L2, L3, Ground	Capacity Control Range (%):	-
Min. Circuit Amps MCA (A):	18.6	Airflow Rate (H) (CFM):	2419
Max Overcurrent Protection (MOP) (A):		Gas Pipe Connection (inch):	1/2
Max Starting Current MSC(A):		Liquid Pipe Connection (inch):	1/4
Rated Load Amps RLA(A):		Sound Pressure (H) (dBA):	54
Dimensions (HxWxD) (in):	28-15/16 x 34-1/4 x 12-5/8	Sound Power Level (dBA):	
Net Weight (lb):	132		

DIMENSIONAL DRAWING - OUTDOOR UNIT

RX15/18WMVJU9





Submittal Data Sheet

Daikin AURORA 1.5-Ton FDMQ Ducted Concealed Unit
FDMQ18WVJU9RXL18WMVJU9

INDOOR ACCESSORIES

PART NUMBER	DESCRIPTION	INCLUDED
AZAI6WSCDKA	DKN Cloud Wi-Fi Adaptor (P1P2)	No
AZAI6WSPDKC	DKN Plus Interface	No
BRC082A43	IR controller for FDMQ	No
BRC1E73	Navigation Remote Controller III(73)	No
BRC1H71W	Madoka Remote Controller	No
DACA-CP1-1	Mini Aqua Condensate Pump	No
DACA-CP2-1	Maxi Orange Condensate Pump	No
DACA-CP3-1	Si-30 Condensate Pump	No
DFBS39A13	MERV 13 Filter Kit	No
DTST-ONE-ADA-A	Daikin One+ Smart Thermostat for VRV, SkyAir, Single- and Multi-Zone System	No
DZKS030E4-3	Zoning Box 4x8" for FXSQ and FDMQ	No
DZKS030E5-3	Zoning Box 5x6" for FXSQ and FDMQ	No
KRCS01-4B	Remote Sensor Kit, (FBQ, FCQ, FTQ, FXFQ, FXMQ, FXTQ)	No
KRCSH2018-01	Button Sensor Kit	No
KRP1C74	Wiring Adapter PCB	No
KRP4A71	Group Control Adaptor PCB	No
KRP4A98	Mounting plate for accessory PCB	No



Submittal Data Sheet

Daikin AURORA 1.5-Ton FDMQ Ducted Concealed Unit
FDMQ18WVJU9RXL18WMVJU9

OUTDOOR ACCESSORIES

PART NUMBER	DESCRIPTION	INCLUDED
FTDBHML	Daikin Bml Drainpan Htr Large	No
KEH063A4E	Daikin BML DrainPan Heater Large	No
KEH063A4EA	Bml LRg Drain Pan Heater Rev A	No
KKG063A42	Back protection wire net	No
KPS063A41	Snow hood (intake side plate) (15, 18 & 24)	No
KPS063A44	Snow hood (intake rear plate) (15,18 & 24)	No
KPS063A47	Snow hood (outlet) (15, 18 & 24)	No
KPW063B4	Air direction adjustment grille	No