



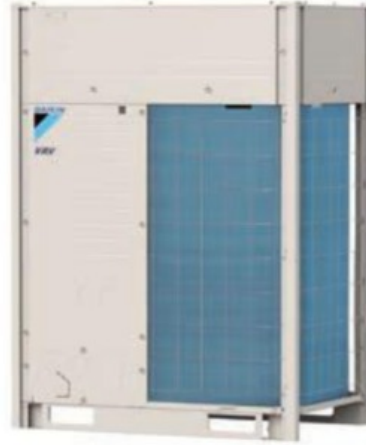
Submittal Data Sheet

14 Ton, 460V, VRV IV X HR

REYQ168XBYDA

FEATURES

- Industry's first 3 phase VRF system to integrate with communicating gas furnaces.
- Design flexibility to enlarge system from single to dual module or dual to triple module without changes to installed main pipe sizes.
- Engineered with Daikin vapor injection compressor for optimized part load efficiencies.
- Hot gas defrost circuit with improved control logic allows installation without base pan heater.
- New service window provides quick access to multi-functional display and configuration buttons.
- Multi-functional display provides refrigerant pressures and temperatures eliminating the need to connect gauges during regular maintenance check.
- Easy commissioning with ability to program settings off site using configurator tool.
- Assembled in the US to increase flexibility and reduce lead times.
- Standard Limited Warranty: 10-year limited parts warranty.
- Compatible with Low Temperature (LT) Hydrobox and EEV Kit for DOAS with hot gas reheat capability



BENEFITS

- Choice of gas furnace or heat pump heating for optimizing operational costs based on utility cost.
- Engineered to optimize capital on phased & tenant fit out commercial buildings.
- Year round comfort and energy savings with Variable Refrigerant Temperature technology (VRT).
- Modular and lightweight - enables flexibility in system layout and installation .
- Corrosion resistance 1000hr salt spray tested Daikin PE blue fin heat exchanger.
- Refrigerant cooled inverter technology keeps PCB cool independent of ambient temperature .
- Field performable Intermittent outdoor fan operation to help minimize snow accumulation on fan blades when the system is off.
- Backwards compatible with T-series Branch Selector boxes.



Submittal Data Sheet

14 Ton, 460V, VRV IV X HR

REYQ168XBYDA

PERFORMANCE

Outdoor Unit Model No.	REYQ168XBYDA	Outdoor Unit Name:	14 Ton, 460V, VRV IV X HR
Type:	Heat Recovery	Unit Combination:	
Rated Cooling Conditions:	Indoor (°F DB/WB): 80 / 67 Ambient (°F DB/WB): 95 / 75	Rated Heating Conditions:	Indoor (°F DB/WB): 70 / 60 Ambient (°F DB/WB): 47 / 43
Rated Piping Length(ft):			
Rated Height Difference (ft):			
Rated Cooling Capacity (Btu/hr):	154,000	Rated Heating Capacity (Btu/hr):	154,000
Nom Cooling Capacity (Btu/hr):	160,000	Nom Heating Capacity (Btu/hr):	188,000
Cooling Input Power (kW):		Heating Input Power (kW):	
EER (Non-Ducted/Ducted):	9.90 / 9.70	Heating COP (Non-Ducted/Ducted):	3.2 / 3.2
IEER (Non-Ducted/Ducted):	18.90 / 16.60	Heating COP 17F (Non-Ducted/Ducted):	2.1 / 2.1
		SCHE (Non-Ducted/Ducted):	21.00 / 15.40

OUTDOOR UNIT DETAILS

Power Supply (V/Hz/Ph):	460 / 60 / 3	Compressor Stage:	Inverter
Power Supply Connections:	L1, L2, L3, Ground	Capacity Control Range (%):	12 - 100
Min. Circuit Amps MCA (A):	31.1	Capacity Index Limit:	-
Max Overcurrent Protection (MOP) (A):	40	Airflow Rate (H) (CFM):	9480
Max Starting Current MSC(A):		Gas Pipe Connection (inch):	1-1/8
Rated Load Amps RLA(A):		Liquid Pipe Connection (inch):	5/8
Dimensions (Height) (in):	66-11/16	H/L Pressure Connection (inch)	7/8
Dimensions (Width) (in):	48-7/8		
Dimensions (Depth) (in):	30-3/16	Sound Pressure (H) (dBA):	65
Net Weight (lb):	793	Sound Power Level (dBA):	
		Max. No. of Indoor Units:	29

Submittal Data Sheet

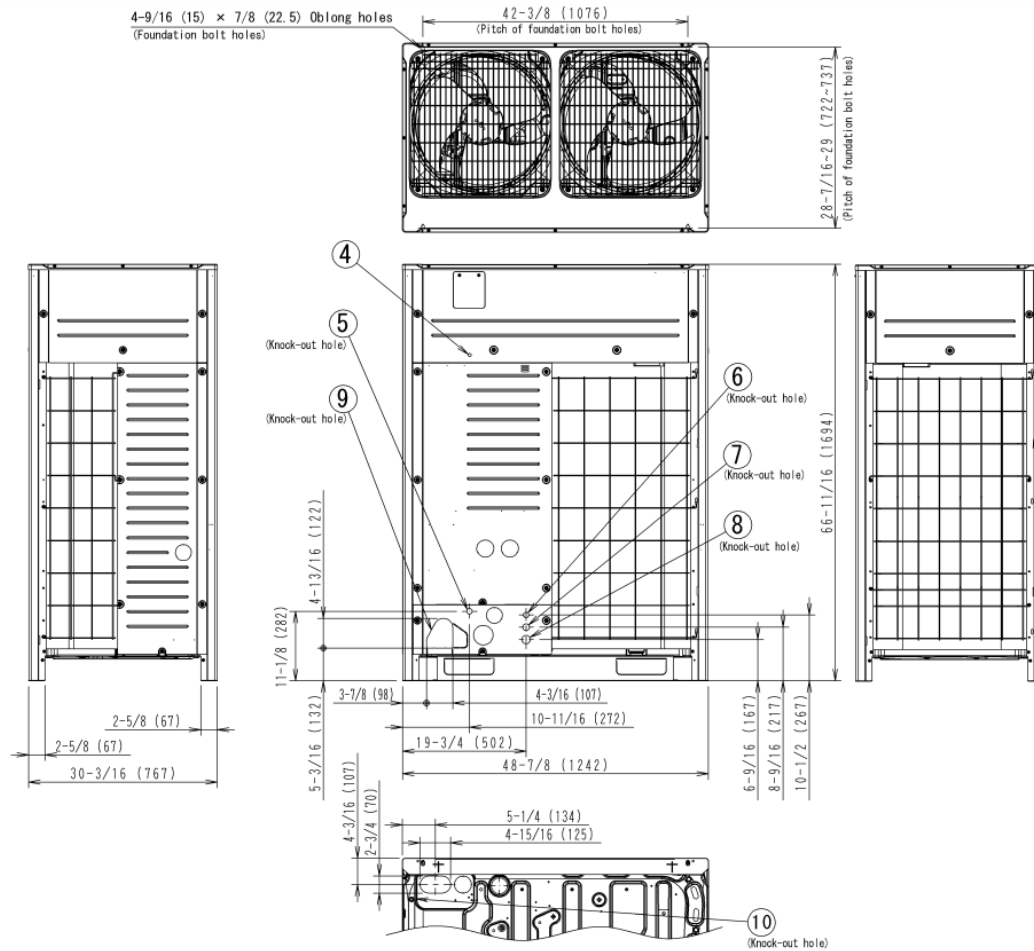
14 Ton, 460V, VRV IV X HR

REYQ168XBYDA

SYSTEM DETAILS

Refrigerant Type:	R-410A	Cooling Operation Range (°F DB):	23 - 122
Holding Refrigerant Charge (lbs):	25.8	Heating Operation Range (°F WB):	-13 - 60
Additional Charge (oz/ft):		Max. Pipe Length (Vertical) (ft):	164
Pre-charge Piping (Length) (ft):		Cooling Range w/Baffle (°F DB):	-
Max. Pipe Length (Total) (ft):	540		
Max Height Separation (Ind to Ind ft):	98		

DIMENSIONAL DRAWING



Notes

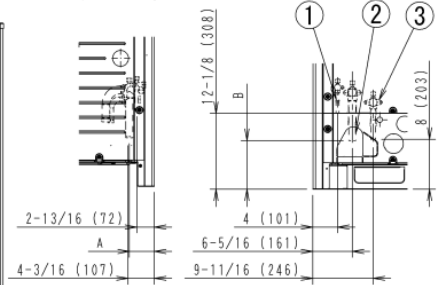
1. For piping connection method (front and bottom sides), see the installation manual.

2. Suction gas pipe

φ1 Brazing connection	REYQ72.96, 120XBTJA-B, XBYDA-B, XBYCA RELQ72TBTJA-B, TBYDA-B, TBYCA
φ1-1/8 Brazing connection	REYQ144, 168XBTJA-B, XBYDA-B, XBYCA RELQ96, 120TBTJA-B, TBYDA-B, TBYCA

Liquid pipe

φ1/2 Brazing connection
High / low pressure gas pipe
φ3/4 Brazing connection



MODEL	A	B
REYQ72.96, 120XBTJA-B, XBYDA-B, XBYCA RELQ72TBTJA-B, TBYDA-B, TBYCA	4-3/16 (107)	7-1/2 (190)
REYQ144, 168XBTJA-B, XBYDA-B, XBYCA RELQ96, 120TBTJA-B, TBYDA-B, TBYCA	4 (102)	7-13/16 (198)

10	Pipe routing hole(bottom)	See note 1.
9	Pipe routing hole(front)	See note 1.
8	Power cord routing hole	φ 1-3/8 (35)
7	Power cord routing hole	φ 1-1/8 (28.6)
6	Power cord routing hole	φ 7/8 (22.2)
5	Transmission wire routing hole	φ 7/8 (22.2)
4	Grounding terminal	Inside of control box (MB)
3	High / low pressure gas pipe connection port	See note 2.
2	Suction gas pipe connection port	See note 2.
1	Liquid pipe connection port	See note 2.
No.	Parts name	Remarks