



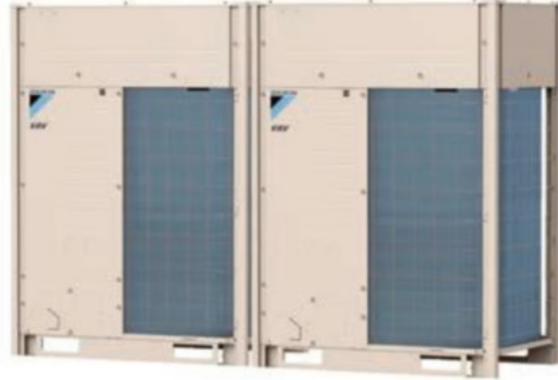
Submittal Data Sheet

26 ton, 575V, VRV IV X HR

REYQ312XBYCA

FEATURES

- Industry's first 3 phase VRF system to integrate with communicating gas furnaces.
- Design flexibility to enlarge system from single to dual module or dual to triple module without changes to installed main pipe sizes.
- Engineered with Daikin vapor injection compressor for optimized part load efficiencies.
- Hot gas defrost circuit with improved control logic allows installation without base pan heater.
- New service window provides quick access to multi-functional display and configuration buttons.
- Multi-functional display provides refrigerant pressures and temperatures eliminating the need to connect gauges during regular maintenance check.
- Easy commissioning with ability to program settings off site using configurator tool.
- Assembled in the US to increase flexibility and reduce lead times.
- Standard Limited Warranty: 10-year limited parts warranty.



BENEFITS

- Choice of gas furnace or heat pump heating for optimizing operational costs based on utility cost.
- Engineered to optimize capital on phased & tenant fit out commercial buildings.
- Year round comfort and energy savings with Variable Refrigerant Temperature technology (VRT).
- Modular and lightweight - enables flexibility in system layout and installation
- Corrosion resistance 1000hr salt spray tested Daikin PE blue fin heat exchanger
- Refrigerant cooled inverter technology keeps PCB cool independent of ambient temperature
- Field performable Intermittent outdoor fan operation to help minimize snow accumulation on fan blades when the system is off.
- Backwards compatible with T-series Branch Selector boxes.



Submittal Data Sheet

26 ton, 575V, VRV IV X HR
REYQ312XBYCA

PERFORMANCE

| | | | |
|----------------------------------|---|--------------------------------------|---|
| Outdoor Unit Model No. | REYQ312XBYCA | Outdoor Unit Name: | 26 ton, 575V, VRV IV X HR |
| Type: | Heat Recovery | Unit Combination: | REYQ144XBYCA + REYQ168XBYCA |
| Rated Cooling Conditions: | Indoor (°F DB/WB): 80 / 67 Ambient (°F DB/WB): 95 / 75 | Rated Heating Conditions: | Indoor (°F DB/WB): 70 / 60 Ambient (°F DB/WB): 47 / 43 |
| Rated Piping Length(ft): | | | |
| Rated Height Difference (ft): | | | |
| Rated Cooling Capacity (Btu/hr): | 296,000 | Rated Heating Capacity (Btu/hr): | 270,000 |
| Nom Cooling Capacity (Btu/hr): | 310,000 | Nom Heating Capacity (Btu/hr): | 351,000 |
| Cooling Input Power (kW): | | Heating Input Power (kW): | |
| EER (Non-Ducted/Ducted): | 9.70 / 9.30 | Heating COP (Non-Ducted/Ducted): | 3.4 / 3.2 |
| IEER (Non-Ducted/Ducted): | 18.40 / 16.50 | Heating COP 17F (Non-Ducted/Ducted): | 2.1 / 2.1 |
| | | SCHE (Non-Ducted/Ducted): | 20.80 / 15.00 |

OUTDOOR UNIT DETAILS

| | | | |
|---------------------------------------|--------------------|--------------------------------|----------|
| Power Supply (V/Hz/Ph): | 575 / 60 / 3 | Compressor Stage: | Inverter |
| Power Supply Connections: | L1, L2, L3, Ground | Capacity Control Range (%): | 6 - 100 |
| Min. Circuit Amps MCA (A): | 22.3 + 24.9 | Capacity Index Limit: | - |
| Max Overcurrent Protection (MOP) (A): | 30 + 30 | Airflow Rate (H) (CFM): | 9480 |
| Max Starting Current MSC(A): | | Gas Pipe Connection (inch): | 1-3/8 |
| Rated Load Amps RLA(A): | | Liquid Pipe Connection (inch): | 3/4 |
| Dimensions (Height) (in): | 66-11/16 | H/L Pressure Connection (inch) | 1-1/8 |
| Dimensions (Width) (in): | 48-7/8 | | |
| Dimensions (Depth) (in): | 30-3/16 | Sound Pressure (H) (dBA): | 68 |
| Net Weight (lb): | 793 + 793 | Sound Power Level (dBA): | |
| | | Max. No. of Indoor Units: | 54 |

Submittal Data Sheet

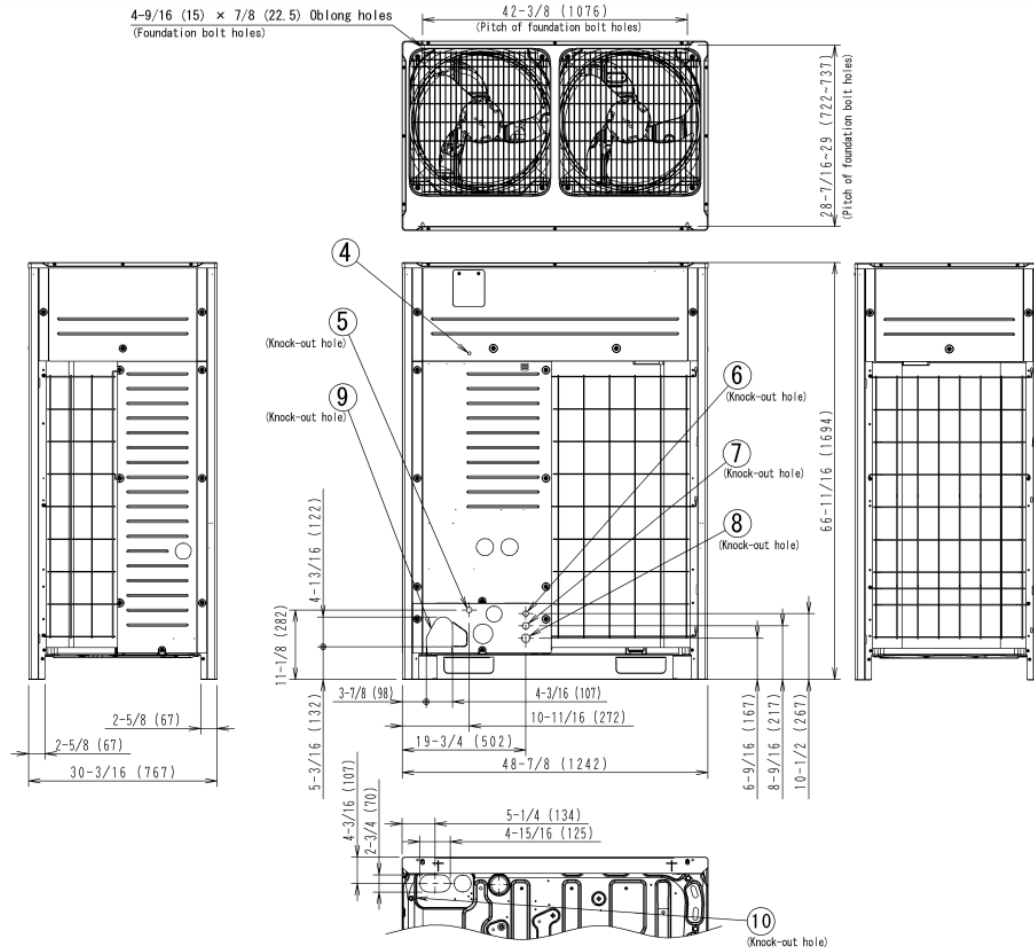
26 ton, 575V, VRV IV X HR

REYQ312XBYCA

SYSTEM DETAILS

| | | | |
|--|--------|-----------------------------------|----------|
| Refrigerant Type: | R-410A | Cooling Operation Range (°F DB): | 23 - 122 |
| Holding Refrigerant Charge (lbs): | 25.8 | Heating Operation Range (°F WB): | -13 - 60 |
| Additional Charge (oz/ft): | | Max. Pipe Length (Vertical) (ft): | 164 |
| Pre-charge Piping (Length) (ft): | | Cooling Range w/Baffle (°F DB): | - |
| Max. Pipe Length (Total) (ft): | 540 | | |
| Max Height Separation (Ind to Ind ft): | 98 | | |

DIMENSIONAL DRAWING



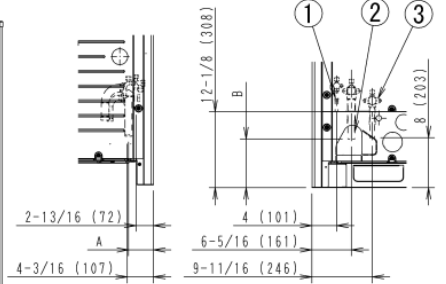
Notes

- For piping connection method (front and bottom sides), see the installation manual.
- Suction gas pipe

| | |
|---------------------------|---|
| φ1 Brazing connection | REYQ72.96, 120XBTJA-B, XBYDA-B, XBYCA RELQ72TBTJA-B, TBYDA-B, TBYCA |
| φ1-1/8 Brazing connection | REYQ144, 168XBTJA-B, XBYDA-B, XBYCA RELQ96, 120TBTJA-B, TBYDA-B, TBYCA |

Liquid pipe

- φ1/2 Brazing connection
- High / low pressure gas pipe
- φ3/4 Brazing connection



| MODEL | A | B |
|---|--------------|---------------|
| REYQ72.96, 120XBTJA-B, XBYDA-B, XBYCA RELQ72TBTJA-B, TBYDA-B, TBYCA | 4-3/16 (107) | 7-1/2 (190) |
| REYQ144, 168XBTJA-B, XBYDA-B, XBYCA RELQ96, 120TBTJA-B, TBYDA-B, TBYCA | 4 (102) | 7-13/16 (198) |

| | | |
|-----|--|----------------------------|
| 10 | Pipe routing hole(bottom) | See note 1. |
| 9 | Pipe routing hole(front) | See note 1. |
| 8 | Power cord routing hole | φ 1-3/8 (35) |
| 7 | Power cord routing hole | φ 1-1/8 (28.6) |
| 6 | Power cord routing hole | φ 7/8 (22.2) |
| 5 | Transmission wire routing hole | φ 7/8 (22.2) |
| 4 | Grounding terminal | Inside of control box (MB) |
| 3 | High / low pressure gas pipe connection port | See note 2. |
| 2 | Suction gas pipe connection port | See note 2. |
| 1 | Liquid pipe connection port | See note 2. |
| No. | Parts name | Remarks |