



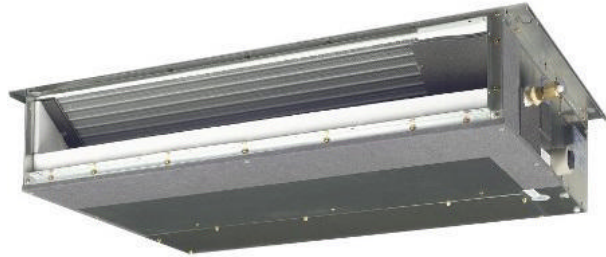
Submittal Data Sheet

2.0-Ton Slim Duct Built-in Concealed Ceiling Unit

FXDQ24MVJU

FEATURES

- The slim height, at only 7-7/8", makes it suitable for most of the applications where attic / bulkhead space is limited
- With a sound level as low as 32 dBA, these systems are among the quietest on the market
- Washable filter included
- Integral condensate pump with up to 23-5/8" lift
- Blends unobtrusively with any interior decor, only the suction and discharge grills are visible
- Standard Limited Warranty: 10-year warranty on compressor and all parts



VRV





Submittal Data Sheet

2.0-Ton Slim Duct Built-in Concealed Ceiling Unit

FXDQ24MVJU

PERFORMANCE

Indoor Unit Model No.	FXDQ24MVJU	Indoor Unit Name:	2.0-Ton Slim Duct Built-in Concealed Ceiling Unit
Type:	Ducted	Rated Cooling Conditions:	Indoor (°F DB/WB): 80 / 67 Ambient (°F DB/WB): 95 / 75
Rated Cooling Capacity (Btu/hr):	24,000	Rated Heating Conditions:	Indoor (°F DB/WB): 70 / 60 Ambient (°F DB/WB): 47 / 43
Sensible Capacity (Btu/hr):	16,400	Rated Piping Length(ft):	
Cooling Input Power (kW):	0.190	Rated Height Separation (ft):	
Rated Heating Capacity (Btu/hr):	27,000		
Heating Input Power (kW):	0.18		

INDOOR UNIT DETAILS

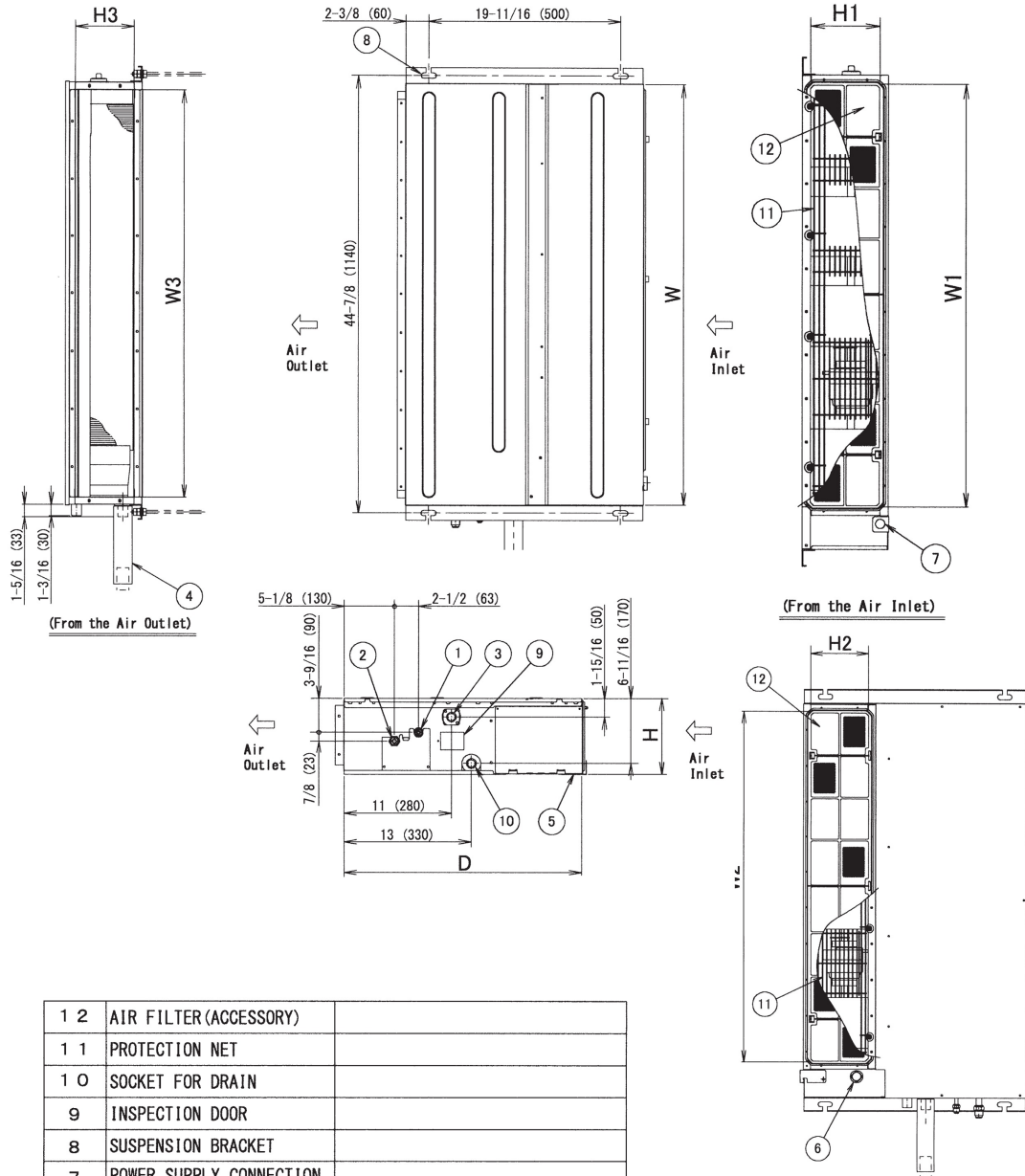
Power Supply (V/Hz/Ph):	208-230 / 60 / 1	Airflow Rate (H/L) (CFM):	580/460
Power Supply Connections:	L1, L2, Ground	Moisture Removal (Gal/hr):	
Min. Circuit Amps MCA (A):	1.4	Gas Pipe Connection (inch):	5/8
Max Overcurrent Protection (MOP) (A):	15	Liquid Pipe Connection (inch):	3/8
Dimensions (HxWxD) (in):	7-7/8 x 43-5/16 x 24-7/16	Condensate Connection (inch):	1-1/32
Net Weight (lb):	71	Sound Pressure (H/L) (dBA):	36/32
Ext. Static Pressure (Rated/Max) (inWg):	0.17" / 0.17"	Sound Power Level (dBA):	

Submittal Data Sheet

2.0-Ton Slim Duct Built-in Concealed Ceiling Unit

FXDQ24MVJU

DIMENSIONAL DRAWING



1 2	AIR FILTER (ACCESSORY)	
1 1	PROTECTION NET	
1 0	SOCKET FOR DRAIN	
9	INSPECTION DOOR	
8	SUSPENSION BRACKET	
7	POWER SUPPLY CONNECTION	
6	TRANSMISSION WIRING CONNECTION	
5	CONTROL BOX	
4	DRAIN HOSE (ACCESSORY)	I. D. ϕ 31/32 (OUTLET)
3	DRAIN PIPE CONNECTION	VP20 (O. D. ϕ 1-1/32 / I. D. ϕ 25/32)
2	GAS PIPE CONNECTION	ϕ 1/2 (FLARE CONNECTION)
1	LIQUID PIPE CONNECTION	ϕ 1/4 (FLARE CONNECTION)
ITEM	PART NAME	REMARK

H	7-7/8 (200)
W	43-5/16 (1100)
D	24-7/16 (620)
Air Inlet (Side)	H1 6-5/16 (160)
	W1 38-9/16 (980)
Air Inlet (Bottom)	H2 6-5/16 (160)
	W2 38-9/16 (980)
Air Outlet	H3 6 (153)
	W3 41-3/4 (1060)

Note: For additional dimensional data and clearance information, refer to Engineering Data