



Submittal Data Sheet

Daikin Polara 2.5-Ton Wall Mounted Heat Pump System
FTX30WVJU9RX30WMVJU9

FEATURES

- Auto Changeover
- Powerful Operation Mode Econo Mode Program Dry Function Intelligent Eye Auto Fan Speed Wide Angle Louvers Dual Flap System Comfort Mode 3-D Airflow Low Ambient Cooling Quiet indoor and outdoor unit operation Auto Changeover and auto restart Self Diagnosis"

BENEFITS

- "For rooms with no false ceiling nor free floor space 10-year parts limited warranty for residential/commercial applications Cooling operation down to -22 F outside temperature Error codes display for fast and easy fault diagnosis Long lasting Titanium Apatite air filter Easy to clean flat panels Econo mode reduces power consumption."

INDOOR UNIT



OUTDOOR UNIT





Submittal Data Sheet

Daikin Polara 2.5-Ton Wall Mounted Heat Pump System
FTX30WVJU9RX30WMVJU9

SYSTEM PERFORMANCE

Indoor Unit Model No.	FTX30WVJU9	Indoor Unit Name:	Daikin POLARA 2.5T Wall Mounted Type IDU
Outdoor Unit Model No.	RX30WMVJU9	Outdoor Unit Name:	Daikin POLARA 2.5-Ton, Heat Pump, Ductless ODU
Rated Cooling Capacity (Btu/hr):	31,400	Rated Cooling Conditions:	Indoor (°F DB/WB): 80 / 67 Ambient (°F DB/WB): 95 / 75
Sensible Capacity (Btu/hr):	31,400	Rated Piping Length(ft):	25
Max/Min Cooling Capacity (Btu/hr):	31,400 / 10,200	Rated Height Difference (ft):	0.00
Cooling Input Power (kW):			
SEER2 (Non-Ducted/Ducted):	17.50 /	HSPF2 (Non-Ducted/Ducted):	7.5 /
EER2 (Non-Ducted/Ducted):	9.85 /	Heating COP (Non-Ducted/Ducted):	2.9 /
Rated Heating Capacity (Btu/hr):	34,800	Rated Heating Conditions:	Indoor (°F DB/WB): 70 / 60 Ambient (°F DB/WB): 47 / 43
Max/Min Heating Capacity (Btu/hr):	34,800 / 10,200		

SYSTEM DETAILS

Refrigerant Type:	R-410A	Cooling Operation Range (°F DB):	50 - 114
Holding Refrigerant Charge (lbs):	3.64	Heating Operation Range (°F WB):	5 - 64
Additional Charge (lb/ft):	0.32	Max. Pipe Length (Vertical) (ft):	66
Pre-charge Piping (Length) (ft):	33	Cooling Range w/Baffle (°F DB):	-22 - 115
Max. Pipe Length (Total) (ft):	99		
Max Height Separation (Ind to Ind ft):	0		

Submittal Data Sheet

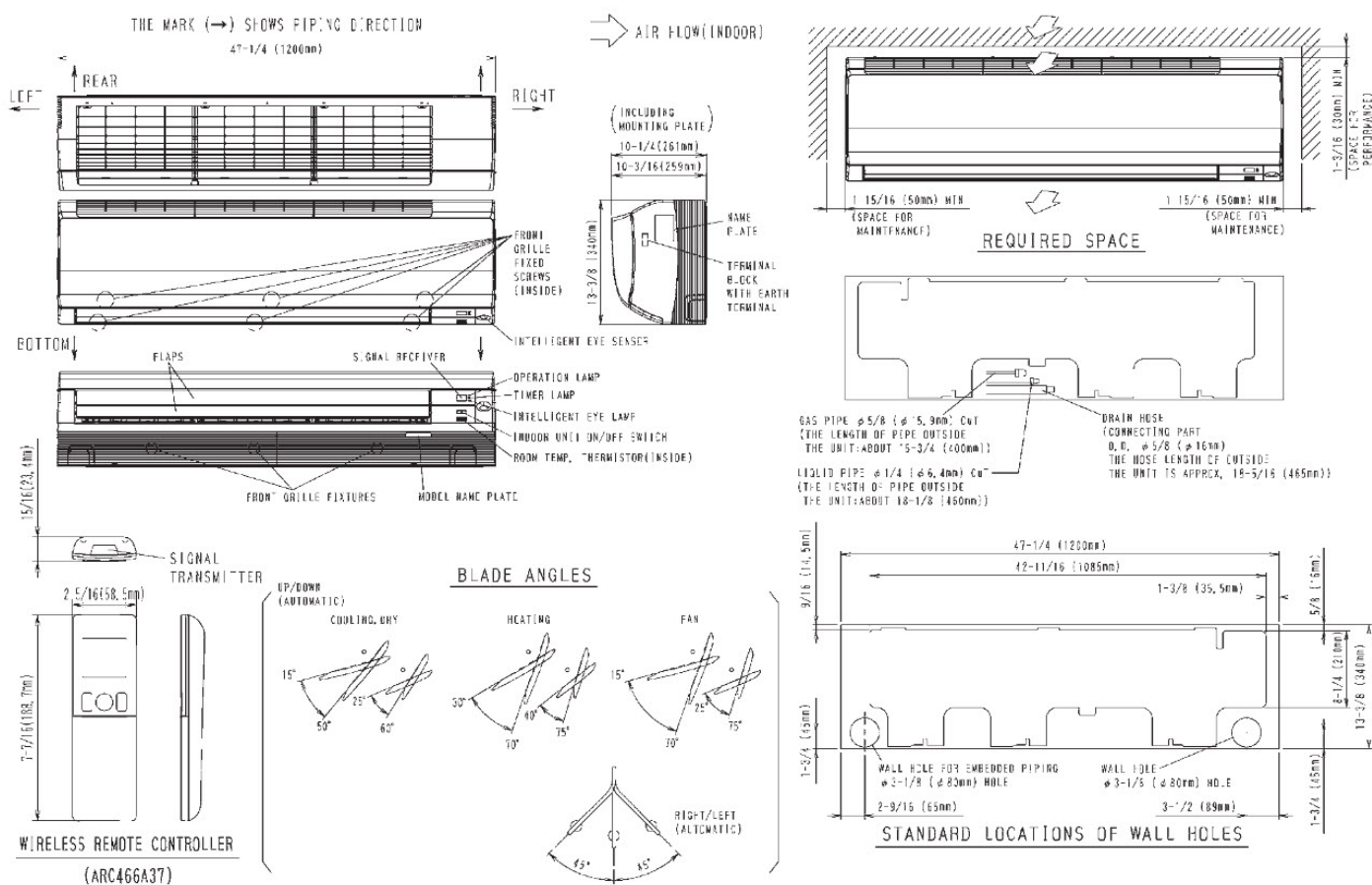
Daikin Polara 2.5-Ton Wall Mounted Heat Pump System

FTX30WVJU9RX30WMVJU9

INDOOR UNIT DETAILS

Power Supply (V/Hz/Ph):	208/230 / 60 / 1	Airflow Rate (H/M/L/SL) (CFM):	890/727/572/512
Power Supply Connections:		Moisture Removal (Gal/hr):	
Min. Circuit Amps MCA (A):		Gas Pipe Connection (inch):	5/8
Max Overcurrent Protection (MOP) (A):		Liquid Pipe Connection (inch):	1/4
Dimensions (HxWxD) (in):	13-3/8 x 47-1/4 x 10-3/16	Condensate Connection (inch):	
Net Weight (lb):	38	Sound Pressure (H/M/L/SL) (dBA):	53/47/40/37
Ext. Static Pressure (Rated/Max) (inWg):	/	Sound Power Level (dBA):	

DIMENSIONAL DRAWING - INDOOR UNIT

FTX30/36WVJU9

Submittal Data Sheet

Daikin Polara 2.5-Ton Wall Mounted Heat Pump System

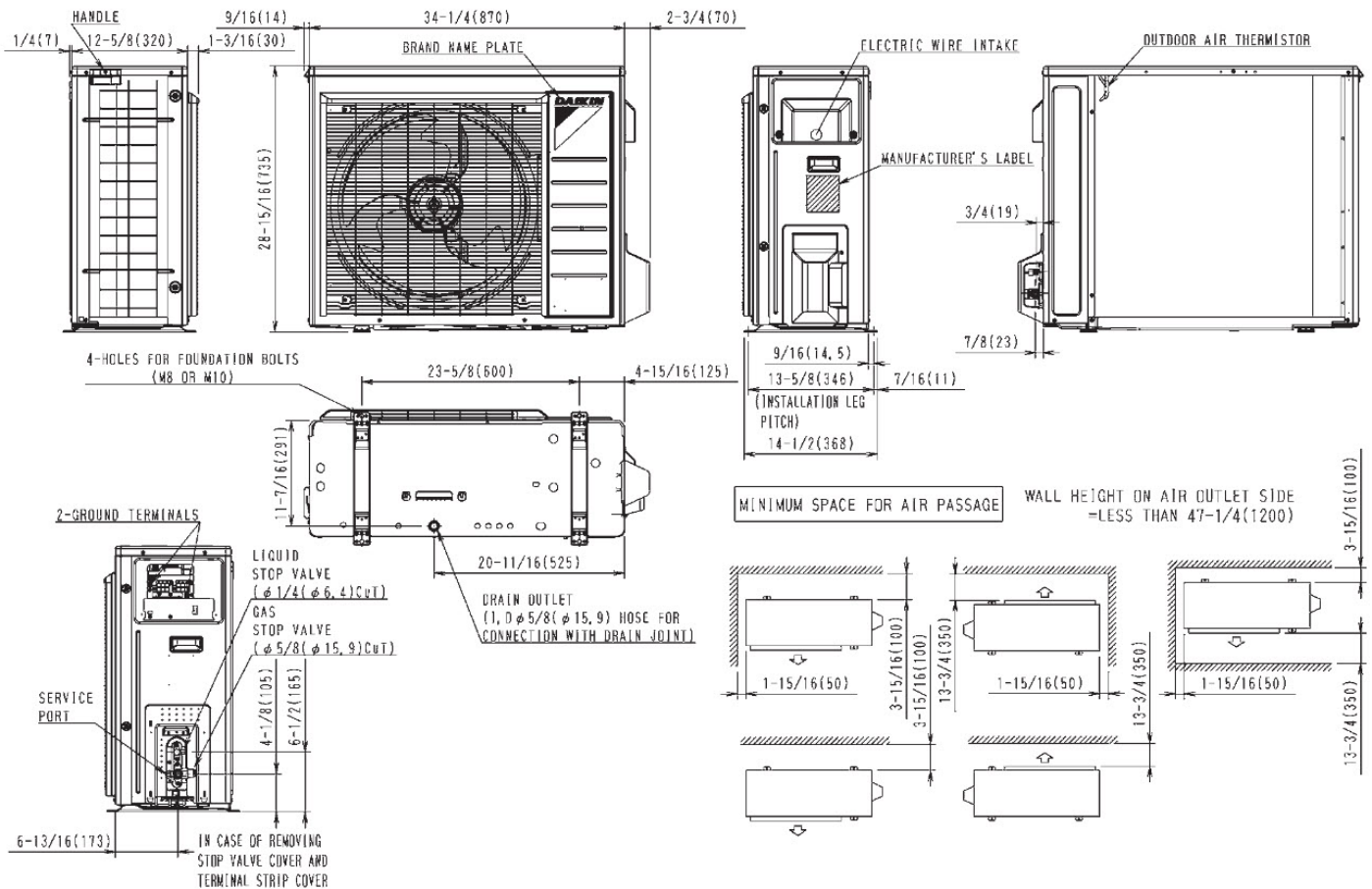
FTX30WVJU9RX30WMVJU9

OUTDOOR UNIT DETAILS

Power Supply (V/Hz/Ph):	208/230 / 60 / 1	Compressor Stage:	Inverter
Power Supply Connections:	1, 2, 3, Ground	Capacity Control Range (%):	-
Min. Circuit Amps MCA (A):	18.6	Airflow Rate (H) (CFM):	2528
Max Overcurrent Protection (MOP) (A):	20	Gas Pipe Connection (inch):	5/8
Max Starting Current MSC(A):		Liquid Pipe Connection (inch):	1/4
Rated Load Amps RLA(A):	18.3	Sound Pressure (H) (dBA):	56
Dimensions (HxWxD) (in):	28-15/16 x 34-1/4 x 12-5/8	Sound Power Level (dBA):	
Net Weight (lb):	133		

DIMENSIONAL DRAWING - OUTDOOR UNIT

RK30/36WMVJU9, RX30/36WMVJU9





Submittal Data Sheet

Daikin Polara 2.5-Ton Wall Mounted Heat Pump System
FTX30WVJU9RX30WMVJU9

INDOOR ACCESSORIES

PART NUMBER	DESCRIPTION	INCLUDED
AZAI6WSCDKB	DKN Residential Cloud Wi-Fi Adaptor for Single- and Multi-Zone System (S21)	No
AZAI6WSPDKC	DKN Plus Interface	No
BRC944B2-A08	Wired Remote Controller kit	No
BRCW901A03	BRC944B2 CONTROL CABLE, 10FT	No
BRCW901A08	Wired Remote Controller Cord - 8m/26ft	No
BRP072A43	Daikin Comfort Control WiFi Adaptor	No
DACA-CP1-1	Mini Aqua Condensate Pump	No
DACA-CP4-1	MINI WHITE PUMP KIT 100-250V	No
DTST-LTE-LA-A	Daikin One Lite (with Translation Adaptor for S21 only)	No
DTST-ONE-ADA-A	Daikin One+ Smart Thermostat for VRV, SkyAir, Single- and Multi-Zone System	No
KRP928BB2S	RA Interface Adaptor for DIII-Net -	No

OUTDOOR ACCESSORIES

PART NUMBER	DESCRIPTION	INCLUDED
KEH063A4E	Daikin BML DrainPan Heater Large	No
KKG063A42	Back protection wire net	No
KPS063A41	Snow hood (intake side plate) (15, 18 & 24)	No
KPS063A44	Snow hood (intake rear plate) (15,18 & 24)	No
KPS063A47	Snow hood (outlet) (15, 18 & 24)	No
KPW063B4	Air direction adjustment grille	No
RAQAHLGD1	Rear Coil Guard BML	No